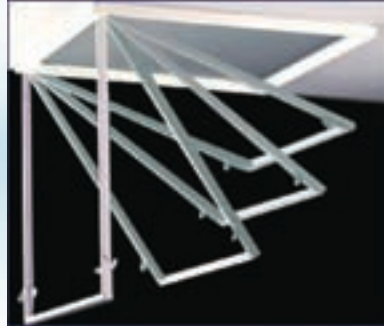


Retrofit Kit assemblies are designed to be installed between an existing luminaire and the inverted tee bar ceiling system.



RFK3™ Retrofit any existing lay-in fixture into a deep cell parabolic aluminum louver.

2'x4': 12, 18 or 32 cell
2'x2': 9 or 16 cell
Finish: Semi-Specular, White



RFK2™ Retrofit any existing lay-in fixture (including 3" deep aluminum) with a standard white steel door frame. 1/2" Frame will accept any lens, louver or eggcrate.

2'x4', 2'x2' and 1'x4'



SLP Lighting

Offering the most comprehensive selection for new and retrofit lighting installations

Tube Guards are a must for any area in which debris from a broken lamp cannot be tolerated. Standard for T5, T8 and T12 lamps, 4' and 8' lengths; other sizes available. Unbreakable polycarbonate with end caps.



- Unbreakable Polycarbonate
- 4' and 8' Lengths Available.
- UV Filters
- Endcaps hold lamps in place and prevent tubes from falling
- Heat Screens for High-output lamps
- Not recommended for T5HO lamps
- **Standard:** Royal Blue, Green, Red, Pink, Bug Yellow and Clear
- Other colors available upon request



Endcaps for Colored Tube Guards
May fit on the outside or the inside of the tube guard.



Endcaps for Clear Tube Guards

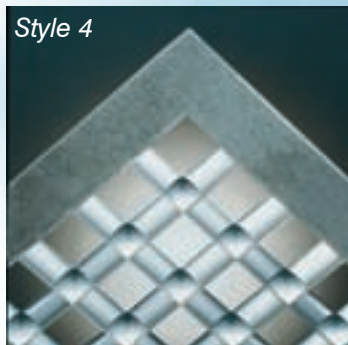
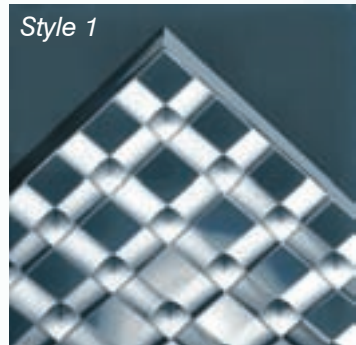


Heat Screens



- PLASTIC & ALUMINUM
- LOUVERS
- EGGCRATE
- PRISMATIC LENSES
- WET LOCATION ENCLOSURES
- WRAP AROUNDS
- GLOBES
- RETROFIT KITS
- TUBE GUARDS

Glare Control Parabolic Louvers



Parasquare® Family

Parabolic Louvers are a square configuration of cells with parabolic (curved) cell walls. Their function is to direct light downward in a controlled manner and eliminate the view of the lights source.

All SLP Parabolic Louvers are available with a flange (Style 4) or without a flange (Style 1) depending on application. Standard Finishes: Specular Silver, Specular Gold, Semi-Specular (Aluma-Lux), Black and White.

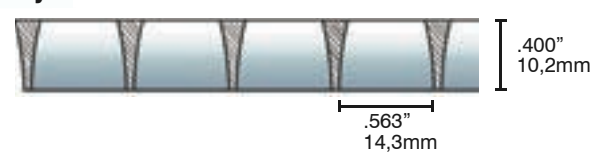
P1: Nominal 5/8" x 5/8" x 7/16 .625" x .625" x .400"
Industry Standard 1/2" Cell Parabolic

P1 - Style 4

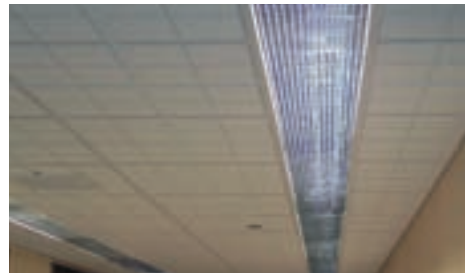


P1 ESP: Nominal 1/2" x 1/2" x 7/16 .563" x .563" x .400"
The ONLY "True" 1/2" Cell Parabolic

P1 - Style 1 ESP



Materials: Styrene or acrylic.
Molded as 2'x4' and 2'x2'.
Special fabrication available.



Replacement Lenses, Wraps and Globes

A wide selection of replacement globes, wraps and shapes are available. Please contact your distributor for information on your product options and how to order.



Acorns & Globes:



VP60 Injection Molded Lens:

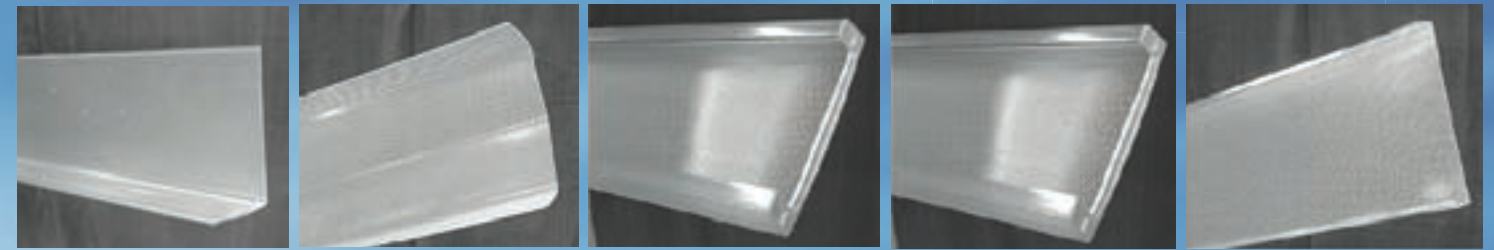


Injection Molded Drop Lens:



- 12" x 12"
- 20" x 20"

Wraparound Lenses:



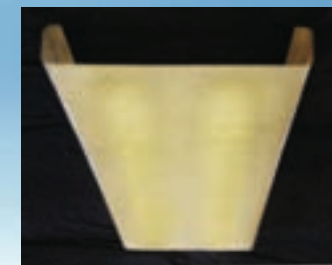
Replacement Wraps

To Order:

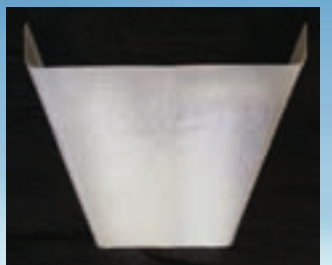
Either send a full size sample of your existing diffuser or if this is impractical:

1. Provide critical dimensions, or trace the profile of the diffuser on a piece of paper.
2. Measure the exact length of the diffuser.
3. Fax or mail this information to SLP Lighting

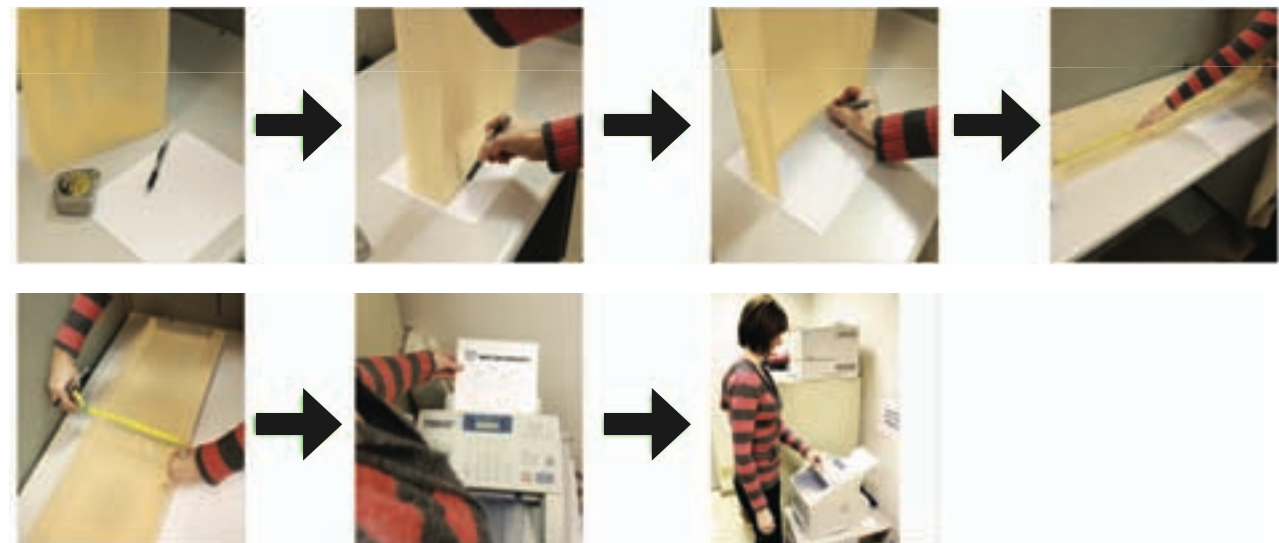
Before:



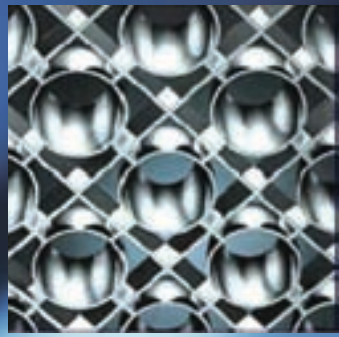
After:



Wraparound Lens Replacement Is Simple!



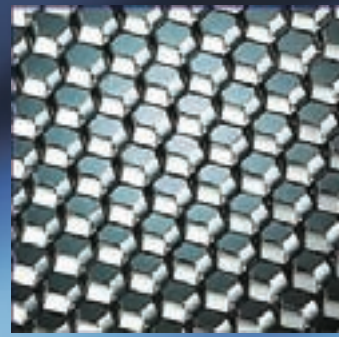
Decorative Louvers



Decorona™



Louver Lens™



Parahex®

Weatherproof Enclosure

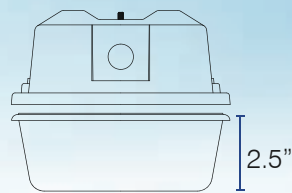
Citadel 1™ is the traditional damp and wet location enclosure. A strip fixture mounted inside the fiberglass housing paired with an Acrylic Blended Lens creating a weatherproof enclosure for T5, T8 or T12 lamps. Inside the housing brass studs and knockouts match the strip locations.



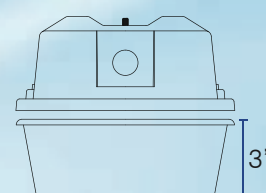
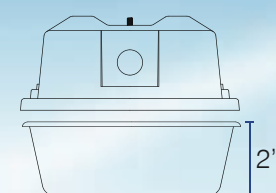
Kits Available:

Fiberglass Housing, Acrylic Blended Lens with Matte Finish, Latch Bag and Endplugs.

Injection Molded Lens:

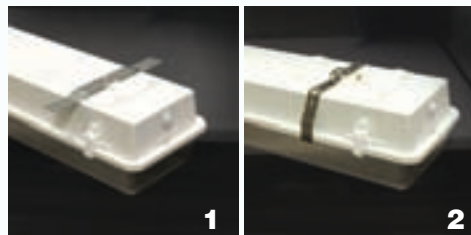


Vacuum Formed Lenses:



Replacement Parts:

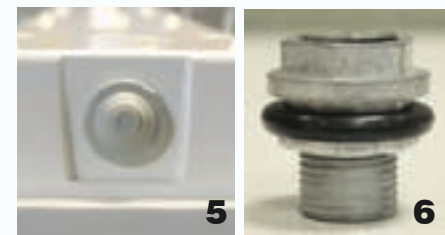
Lenses	4 Foot	8 Foot
2.5" Injection Molded Lens	+	+
2" Vacuum Formed Lens	+	
3" Vacuum Formed Lens		+



Mounting
External Mounting Plate (1)
External Mounting Bracket (2)



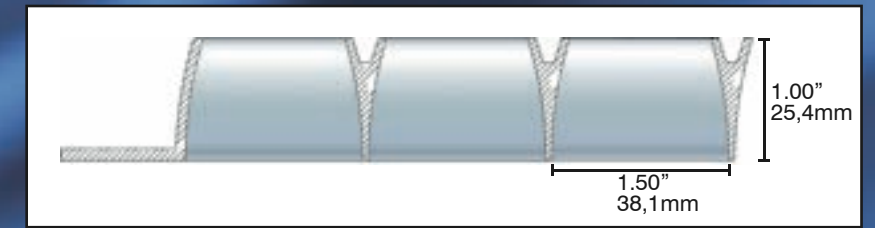
Latch
Plastic Celcon Latches (3)
Stainless Steel Latches (4)



Accessories
Rubber Endplugs (5)
Dicast Bushings (6)

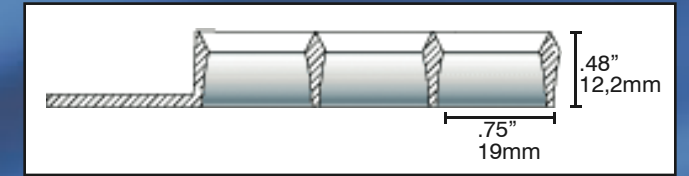
P2: 1-1/2" x 1-1/2" x 1"

Materials: Styrene or acrylic.
Molded as 2'x4', 2'x2' and 1'x4'.
Special fabrication available.



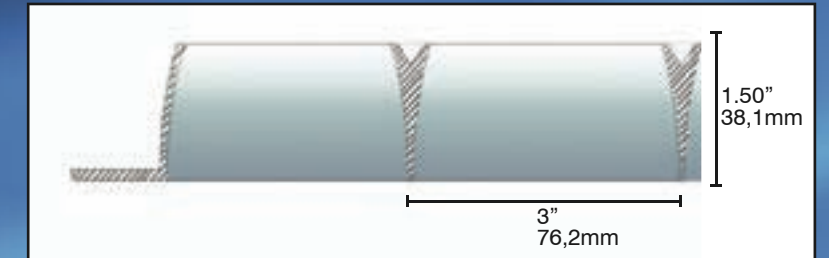
P3: 3/4" x 3/4" x 1/2"

Materials: Styrene or acrylic.
Molded as 2'x4' and 2'x2'.
Special fabrication available.



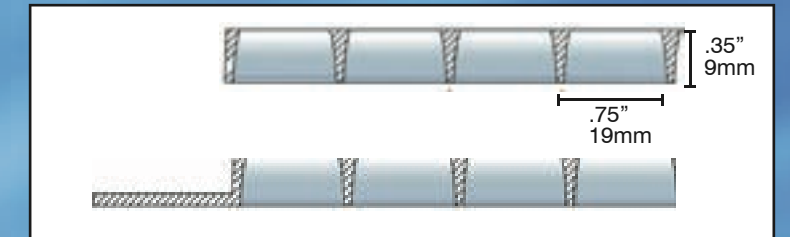
P4: 3" X 3" X 1-1/2"

Materials: Styrene or acrylic.
Molded as 2'x4', 2'x2' and 1'x4'.
Special fabrication available.



P5: 3/4" x 3/4" x 3/8"

Materials: Styrene.
Molded as 2'x4' and 2'x2'.
Special fabrication available.



Replace the Lens NOT the Fixture!



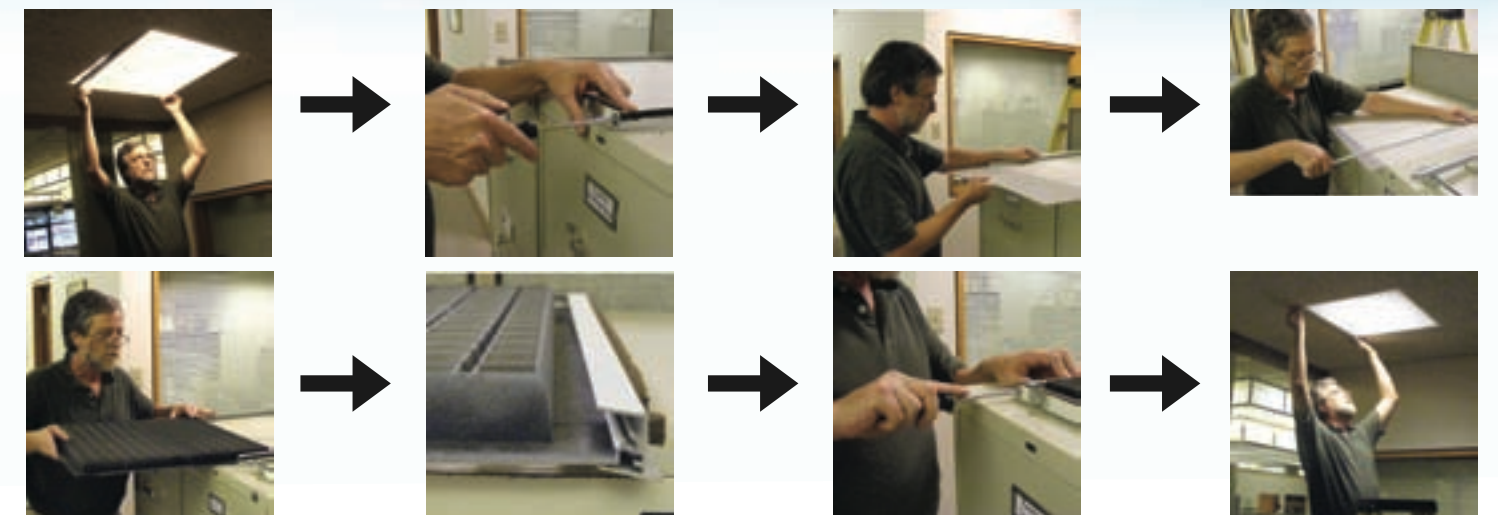
Old Lens



New Parabolic Louver

1. Unlatch and remove existing door frame
2. Disassemble door frame and remove lens/louder
3. Measure existing lens/louder

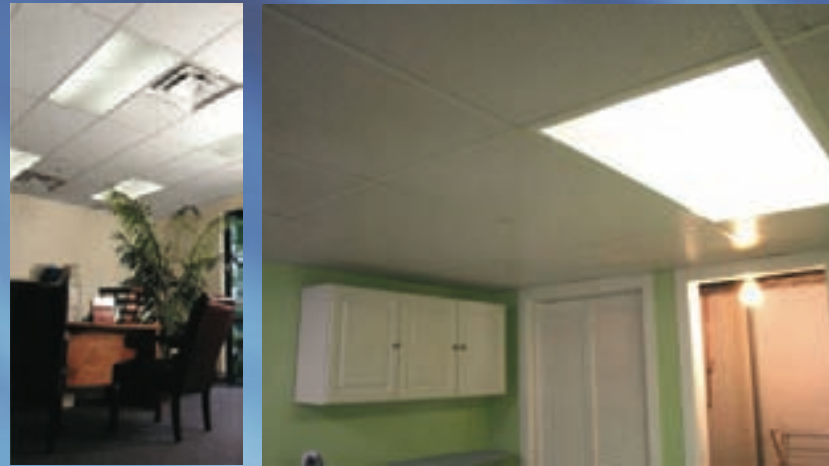
4. Factory to cut new lens/louder to fit
5. Install new lens/louder into existing fixture door frame



Lenses

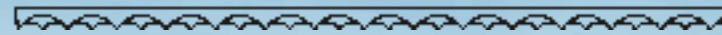
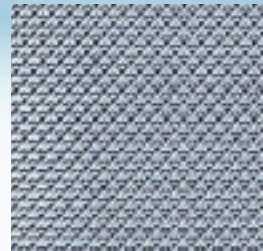
A lens is a flat sheet of plastic, usually clear or white. The distribution of the light is skewed depending on the pattern of the lens. Random and uncontrolled distribution creates a bright area of light. With certain patterns, the lamp image is reduced.

All Lenses are available in Non-Yellowing Clear Acrylic.



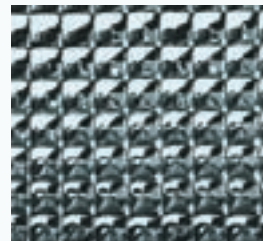
Injection Molded Prismatic Lens: Male conical prism of .175" or .125" at base

- Thickness: .190", .175" or .150"
- Standard sizes up to 4'x4'



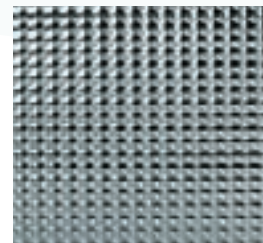
Prismatic Pattern 12: The industry standard 3/16" female prismatic lens.

- Thickness: .095", .100" or .125"
- Styrene Only Available in .100" Thick
- .100" Also Available in White
- Standard sizes up to 50"x100"



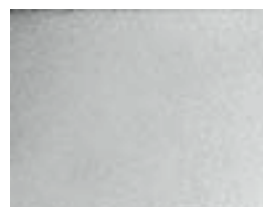
Prismatic Pattern 15: The bold 3/8" female prism of Pattern 15 offers reduced glare and an upgraded appearance.

- Thickness: .200"
- Standard sizes up to 4'x4'



Prismatic Pattern 19: The 3/16" male prism of Pattern 19 offers the lowest glare of the prismatic lenses.

- Thickness: .156"
- Standard sizes up to 4'x4'

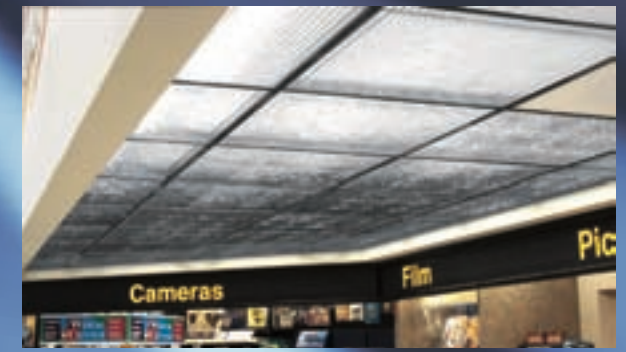


Translucent Acrylic:

- Acrylic
- Frosted White or Matte Clear
- Thickness: .040" or .080"
- Standard sizes up to 2'x4'

Eggcrate Louvers

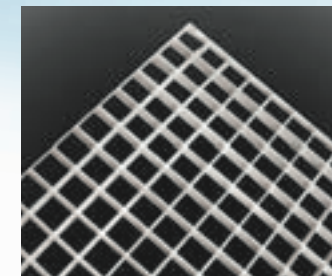
Eggcrate is a square configuration of cells. The cell walls that are flat. The function of eggcrate is to block any view of the space above while creating a bright area of light.



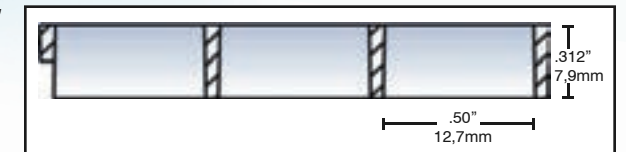
T Series:

Nominal 1/2" x 1/2" x 1/2"
Styrene or Acrylic
White
Available 1x4, 2x2, 2x4, 3x4
and 30x60

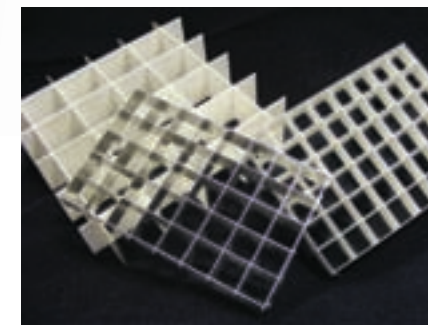
TC Economy: Nominal 1/2" x 1/2" x 3/8"
Styrene - White, Black, Specular Silver or Specular Gold
Acrylic - White



TC500: Nominal 1/2" x 1/2" x 3/8"
True 1/2" Cell Size
Styrene - White, Black, Specular Silver or Specular Gold
Acrylic - White



Aluminum Eggcrate



AT: 1/2" cube aluminum



AT1: 1" cube aluminum

Finishes: baked white enamel, mill finish, clear anodized or black enamel. Other cell sizes available