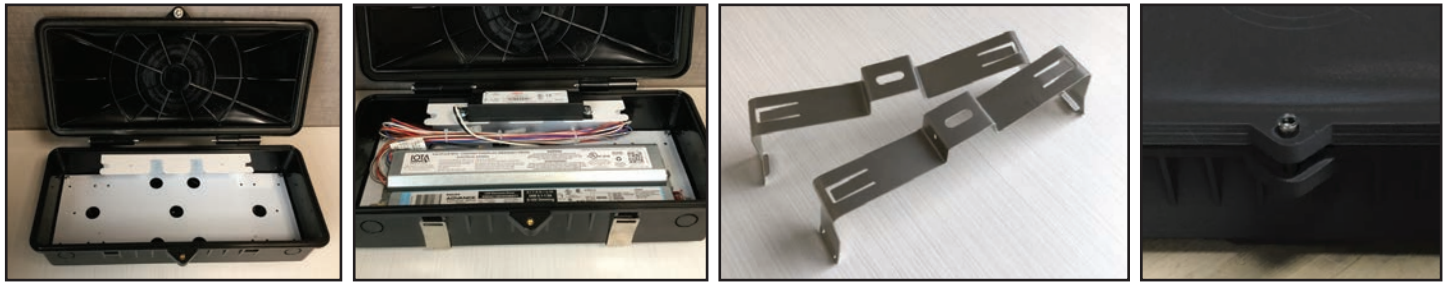
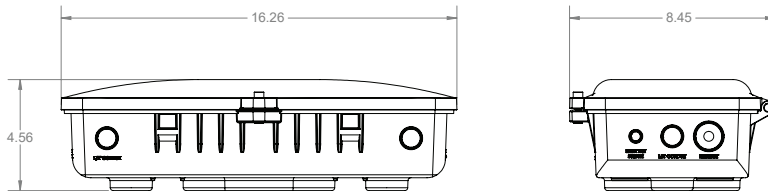


Remote Box

Sturdy polymer remote weatherproof enclosure box with driver attachment tray for universal adaptation. Includes conduit access points and optional mounting brackets available. Use with any fixture where serviceability and remote access for battery, driver or IoT device is required. The separation of the light source from electrical devices results in improved heat dissipation. Rated for 55° Celsius ambient temperature.



APPLICATIONS

- Designed to accommodate different form factors
 1. Lineal
 2. Round
 3. Square
 4. Mounting options – hub, brackets, conduit/stem, J-box

CERTIFICATIONS

- Electrical enclosure
- UL1598 Recognized
- UL50 Listed / NEMA 4X Listed
- NEMA 13
- NSF
- IP66, IP67
- IP69

FEATURES & BENEFITS

- Injection Molded Plastic Base And Lid With Good Chemical Resistance
- Accommodates Drivers, Battery Packs and Controls
- Rated For 55°C Ambient
- Accommodates Various Mounting Configurations, Including Wall, Ceiling, J-Box, Or To New CircLED Fixture
- Optional Mounting Brackets Available
- Various Knock Outs Provided For Conduit, Ethernet, And Battery Pack Test Switch/Indicator Light
- No Loose Hardware
- Black

Product offering and specifications subject to change without notice.

Remote Box Ordering

DIMENSIONS	DESCRIPTION	PART #	PCS/CTN	WT/CTN	FULL SKID QTY.
16.25" x 8.45" x 4.56"	UL1598 REMOTE BOX COMPLETE ASSEMBLY - BLACK	RB-NRL-16-BLK			
16.25" x 8.45" x 4.56"	NEMA 4X REMOTE BOX COMPLETE ASSEMBLY - BLACK	RB-NRL-16-BLK-4X			

Mounting Hardware

REMOTE BOX MOUNTING BRACKETS 316 STAINLESS STEEL	RB-MB-2			
316 STAINLESS STEEL HOOK	SLP-HOOK-SS-NH75			

Product offering and specifications subject to change without notice.