

# PROFILE

**LED ENCLOSED & GASKETED FIXTURE**

SLEEK DESIGN - EASY TO CLEAN AND SERVICE - STAINLESS MOUNTING HARDWARE



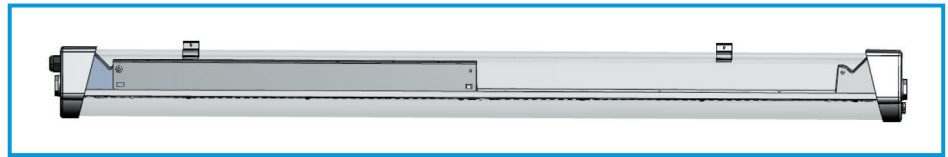
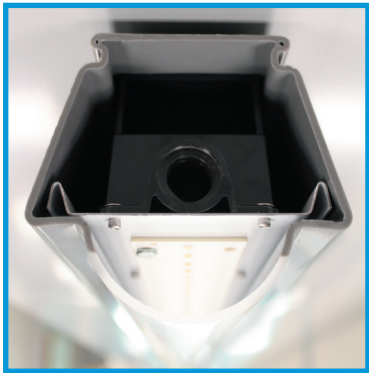
**The Profile I is the first in a series of uniquely shaped enclosures.**



The Profile I is the first in a series of uniquely shaped enclosures. The foundation is a versatile internal component system designed to stay the same which increases speed to market with reduced tooling on future housing designs in the Profile series.

# Housing

- Single Piece Co-Extruded Lens and Housing
- (f1) Rated Acrylic or Polycarbonate
- UL Approved and evaluated for daisy chaining
- Lens and Housing all in one piece
- 2', 4' or 8' lengths



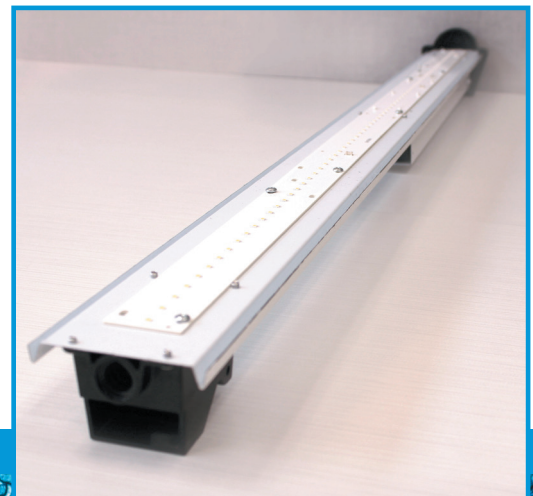
**Length:** 2', 4' or 8' **Width:** 3.86" **Depth:** 3.75"

**PRF-S1-HE-GRY-A-2 / PRF-S1-HE-GRY-A-4 / PRF-S1-HE-GRY-A-8**

Designed for complete compatibility with LEDs

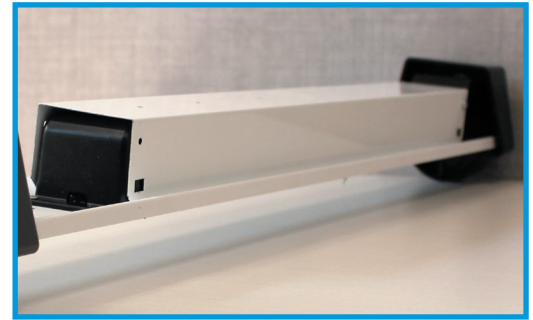
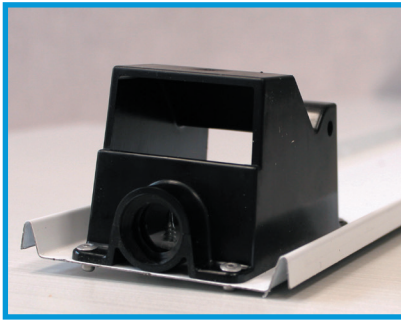
# Boardtrays

- Pre-painted Cold Rolled Steel
- 2', 4', 8' lengths
- Single row LEDs
- LZ Trays for Linear Zhaga Compliant Boards
- PES Trays for Philips EaseSelect 4' board
- Custom Boardtrays available upon request

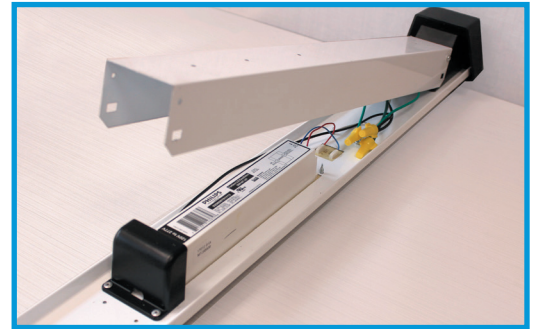


# Driver Placement

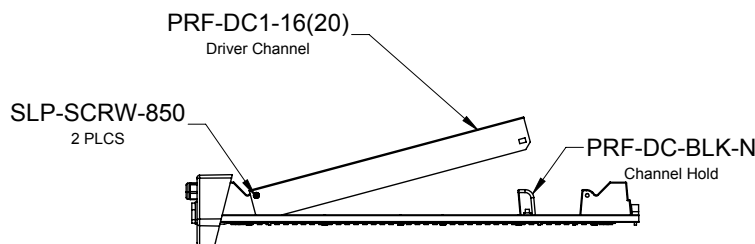
- End Holds mount to edges of the boardtray: **PRF-EH-BLK-N**
- Channel Hold mounts to boardtray near the center: **PRF-CH-BLK-N**
- Driver Channel creates enclosure for the driver: **PRF-DC1-16** or **PRF-DC1-20**



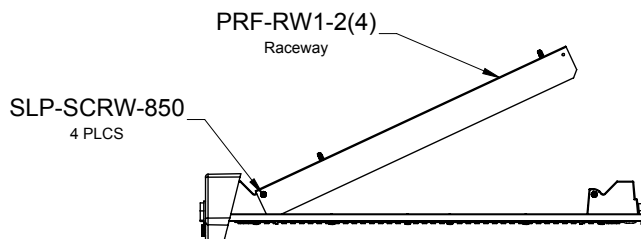
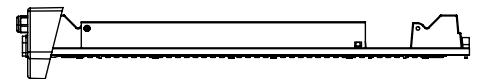
- Three components; End Hold, Driver Channel and Channel Hold, create the encapsulated electrical enclosure where all higher voltages are to be located.
- All components meet UL1598 requirements
- Driver Channel Hinges for easy maintenance



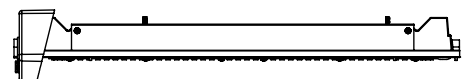
- Optional Raceway for driver enclosure **PRF-RW1-2** or **PRF-RW1-4**
- Raceway profiles full through wiring from end to end
- Attaches to each End hold with screws, eliminating the Driver Hold



Profile Series with Driver Channel  
*Channel Hold Required*



Profile Series with Raceway  
*No Channel Hold Required*



*Raceway fully attached via screws.*

# End Caps



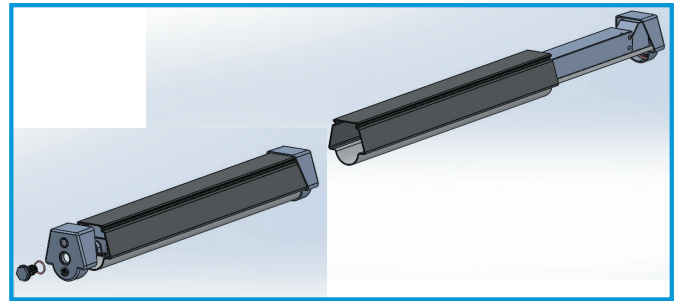
- Gasketed End Cap: **PRF-S1-EC-BLK-N-S**
- Two Per Fixture
- Knock outs for power feed and Drill Point for Optional Vent (Provided by Others)



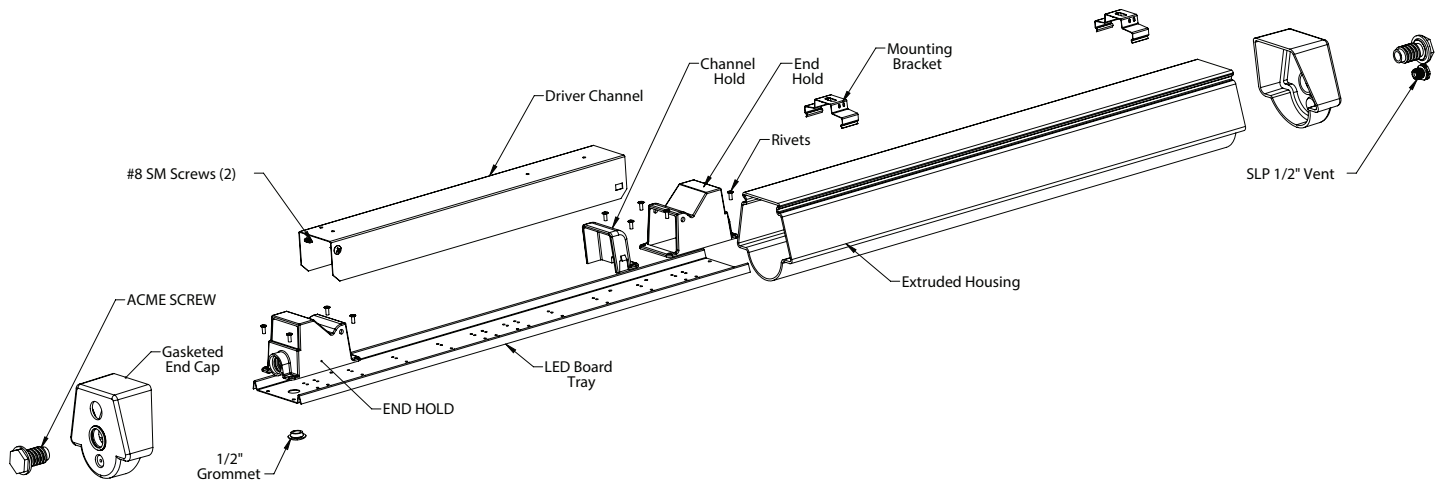
- Installation is quick and easy using Acme Screw (one per end-cap): **PRF-AS-BLK-N**

## End Cap Installation:

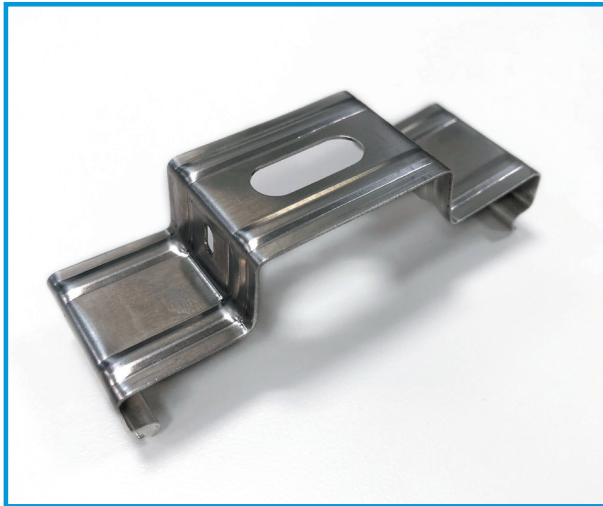
1. Install Endcap to Driver Side End Hold using one Acme Screw
2. Slide Housing Extrusion over the tray assembly
3. Using a second Acme Screw tighten another End Cap onto unit completing the enclosure



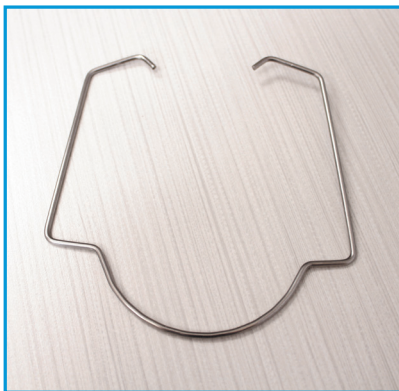
# Hardware Placement:



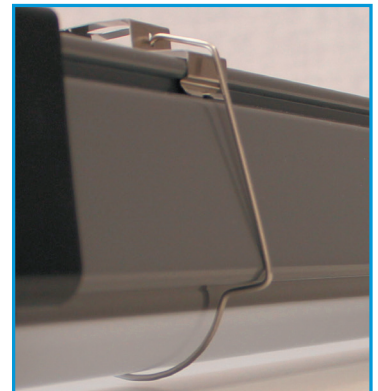
# Mounting Bracket



- 316 Stainless Steel: **PRF-MB**
- Easy Snap on Installation
- Optional mounting systems:
  - Direct to Ceiling
  - Bail for Chain
  - Hole for Threaded Rod Pendant



- Optional Safety Bail: **PRF-S1-SB**
- Snaps around fixture into Mounting Bracket



# Certifications

UL

NSF

IP65

IP66

RoHS



SLP LIGHTING  
1400 S. OLD HIGHWAY 141  
FENTON, MO 63026 USA  
PHONE: 800.248.0224 / 636.600.4084  
FAX: 636.600.4108  
SALES@SLPLIGHTING.COM  
WWW.SLPLIGHTING.COM

V08162018