



**PROFILE I SERIES**

The Profile I is the first in its series of uniquely shaped enclosures. The foundation is a versatile internal component system designed to stay the same which increases speed to market with reduced tooling on future housing designs in the Profile series.

**FEATURES & BENEFITS**

**Housing:**

- Single piece, co-extruded lens and housing
- UL f1 rated polycarbonate
- Available in black or frosted
- UL approved and evaluated for daisy chaining

**Board & Driver Trays**

- Pre-painted cold rolled steel
- Single row LEDs
- LZ trays for linear Zhaga compliant boards
- The following three components create the encapsulated electrical enclosure where all higher voltages are to be located:
  1. End Hold
  2. Driver Channel
  3. Channel Hold
- All components meet UL 1598 requirements
- Driver channel hinges for easy maintenance



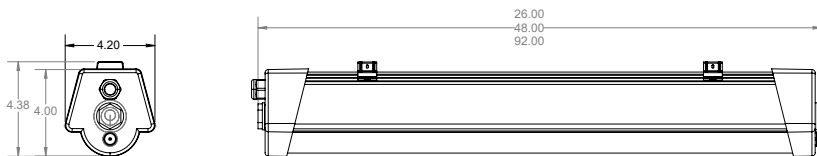
**Gasketed End Caps**

- Vented end plug
- Liquid silicone rubber gasket adhered to the end cap
- Acme screws on both ends to hold the entire unit together
- Locknut wall to ease tightening of the cord grip used for power input feed
- Center boss serves as a stop in case of overtightening to protect the gasket



**DIMENSIONS**

- Available in 2', 4' and 8'
- All dimensions shown in inches unless otherwise noted



**CERTIFICATIONS**



# SLP LIGHTING

## PROFILE I SERIES

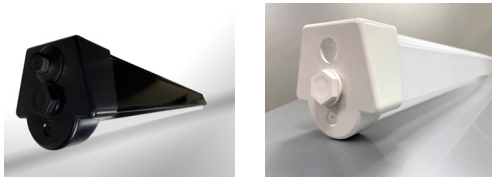
### ACCESSORIES & OPTIONS

Materials:

- (f1) rated co-extruded polycarbonate housing and lens

Colors:

- Polycarbonate Housings:
  - » Black
  - » White
- End Caps:
  - » Black
  - » White



Photometrics available at  
[http://www.slplighting.com/SLP/photometrics\\_enter.html](http://www.slplighting.com/SLP/photometrics_enter.html)

### INSTALLATION

- Easy Snap On Installation: 316 Stainless Steel Mounting Bracket
- Other Mounting Systems:
  - » Direct to Ceiling
  - » Bail for Chain or Gripple Cable
  - » Hole for Threaded Rod Pendant



### APPLICATIONS

- Warehouses
- Awnings
- Outdoor Facilities
- Garden Centers
- Offices
- Locker Rooms
- Cold Storage
- Transportation