

# SLP END PLUGS

SLP Lighting accommodates entry holes for wiring our components into a complete unit. Our Citadel line uses a black standard end plug. As we expand our product lines we now offer a larger end plug for new round fixtures as well as a vented end plug option to help maintain IP ratings.

## CT-ENDPLUG-B



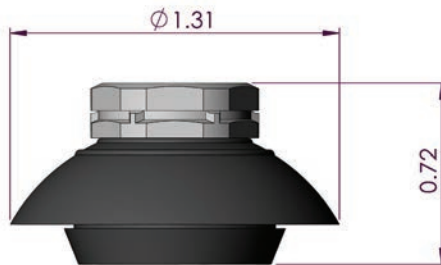
- Endplug designed for Citadel Enclosure Entry Holes



## SLP-ENDPLUG-B-V



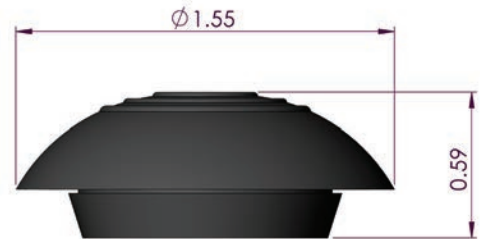
- SLP Vented Endplug
- Designed for Citadel Enclosure Entry Holes
- Profile I



## SLP-ENDPLUG-B-75



- Larger Diameter Endplug
- Designed for Citadel Round Housing Entry Holes
- CircLED Wiring Chimney



## APPLICATIONS

- Designed for Citadel Enclosure Entry Holes
- Profile I
- Citadel Round Housing entry hole
- CircLED Chimney Hole

## CERTIFICATIONS

- (f1)5VA Black Polymeric
- UL File E215168
- Vented Plug Assists in Maintaining IP Ratings
- UL94 V0 for GORE® PolyVent

## FEATURES & BENEFITS

- Single part, for quick, easy installation
- Enables adoption of more cost-efficient enclosure designs (thinner walls, lighter overall weight)
- SLP Vent Plug Maintains IP Ratings
  - Supports passing IPX9
  - Enabled Citadel 2 rating of IP69 (IEC 60529)

ORDERING	PART #	PCS/BAG	PCS/CTN	WT/CTN
CITADEL ENCLOSURE BLACK ENDPLUG	CT-ENDPLUG-B	200	2000	22LBS/10KG
SLP VENTED ENDPLUG FOR BETTER IP RATINGS	SLP-ENDPLUG-B-V	10	500	6LBS/2,72KG
LARGER 3/4" BLACK ENDPLUG	SLP-ENDPLUG-B-75	200	2000	22LBS/10KG

GORE and design are trademarks of W. L. Gore & Associates, Inc.

Product offering and specifications subject to change without notice.