

CITADEL ROUND™

The Citadel Round™ is a combination of the Citadel Enclosures' best features in a smaller, round unit for tight, low bay areas that need LED light. Latches are replaced with SLP's PinSert System giving it a super sleek and clean look.

FEATURES & BENEFITS

Housing:

- UL 5VA fiberglass (will not melt or burn)
- UL approved for through wiring
- UL f1 rated (suitable for outdoor use and exposure to ultraviolet light)
- Meets UL 746 (suitable for exposure to and immersion of water)

Board & Driver Trays

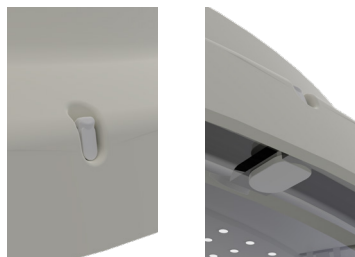
- LED boards attached to a one-piece painted white steel tray
- Tray securely snaps into stainless steel retainer clips, which are installed in housing
- Drivers are attached to the driver attachment rail (plate), which is installed in the base of the housing for maximum heat dissipation

Gasket

- "Poured-in-place", closed cell polyurethane
- Compression recovery of 95% to 99%
- Will not support fungal growth

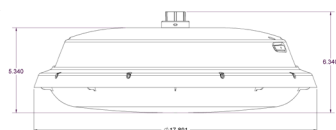
NO Bulky Latches

- LED boards attached to a one-piece painted white steel tray
- Tray securely snaps into stainless steel retainer clips, which are installed in housing
- Drivers are attached to the driver attachment rail (plate), which is installed in the base of the housing for maximum heat dissipation



DIMENSIONS: 18" Diameter

- All dimensions shown in inches unless otherwise noted



CERTIFICATIONS



SLP LIGHTING

CITADEL ROUND

ACCESSORIES & OPTIONS

Optics

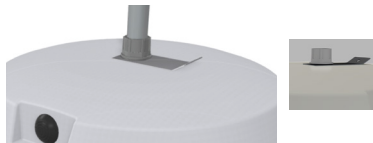
- All SLP lenses are injection molded and have the Guardian Seal feature
- Optional stainless steel lens tethers (which connects the lens to the board tray) are available for ease of maintenance without the possibility of dropping lens
- Smooth drop lens
- Available in either clear or FR50 frost
 - » Acrylic
 - 100% impact modified (similar to DR), non-yellowing
 - Best in areas with UV exposure
 - Clear Transmission: 93%
 - Frosted Transmission: 83%
 - » Polycarbonate
 - UV stabilized
 - Best in extreme temperature conditions (freezers/foundries)
 - Clear Transmission: 89%
 - Frost Transmission: 82%



Photometrics available at
http://www.slplighting.com/SLP/photometrics_enter.html

INSTALLATION

- Fixture can be mounted in various ways:
 - » SLP Hook
 - » Pendant with SLP Hub
 - » Direct Ceiling Mount
 - » J-Box Housing (CTR-HV5-18-PIP-JB)



APPLICATIONS

- Low bay areas that require a smaller LED enclosure
- Replacement for existing round installations
- Ideal for both industrial and architectural environments
- Designed for food processing
- Parking garages
 - Reflector available:
 - Mirror reflector added to the Citadel Round
 - Redirect light output to 60° to 80° zones
 - Meets standard DLC requirements (not listed)
 - Enhances illumination in parking garage areas
 - Optimizes overall lighting distribution for efficiency

