

CITADEL 4i - LED WIDE 4'

Citadel 4i™ Enclosures Designed for Industrial Applications. Highly Adaptable and Robust. Completely compatible for LED Boards.

FEATURES & BENEFITS:

Housing

- UL 5VA fiberglass (will not melt or burn)
- UL approved for through wiring
- UL f1 rated (suitable for outdoor use exposure to ultraviolet light)
- Meets UL 746 (suitable for exposure and immersion of water)

Board & Driver Trays

- LED boards are attached to a 1-piece painted white steel tray
- Tray securely snaps into stainless steel retainer clips, which are installed in housing
- Drivers are attached to the to the driver attachment rail (plate), which is installed in the base of the housing for maximum heat dissipation

Gasket

- "Poured in place", closed cell polyurethane
- Compression recovery of 95-99%
- Will not support fungal growth

Latches or Lens Clips

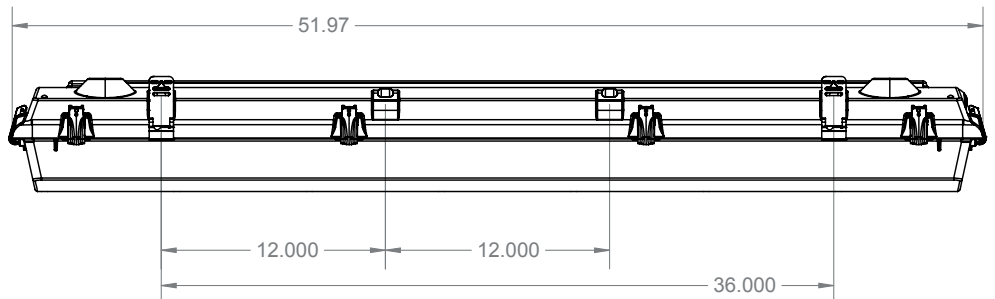
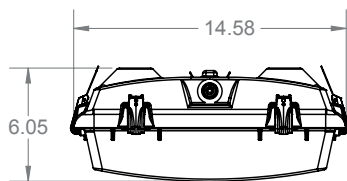
- CAPTIVE, affixed to the housing therefore will not fall off
- LOCK open thus saving time and money during maintenance and installation
- TAMPER proof, when using screws
- Lens Clips Available in Marine Grade 316-Stainless Steel
- Latches Available in
 - Marine Grade 316-Stainless Steel
 - White POM



DIMENSIONS:

Available in 4' lengths

All dimensions are shown in inches unless otherwise noted.



CERTIFICATIONS:



Learn about SLP Certifications at:

www.splighting.com/SLP/certificatedefinitions.html

SLP LIGHTING

CITADEL 4i - LED WIDE 4'

ACCESSORIES & OPTIONS:

Optics:

- All SLP lenses are injection molded and have the Guardian Seal feature
- Optional stainless steel lens tethers (which connects the lens to the board tray) are available for ease of maintenance without the possibility of dropping lens
- Available in either Clear or FR50 Frost
 - Acrylic
 - 100% impact modified (similar to DR), non-yellowing
 - Best in areas with UV exposure
 - Clear transmission 93%
 - Frosted transmission 88%
 - Polycarbonate
 - UV stabilized
 - Best in extreme temperature conditions (freezers/ foundries)
 - Clear transmission 89%
 - Frost transmission 82%

Lens

- Smooth Shallow Profile



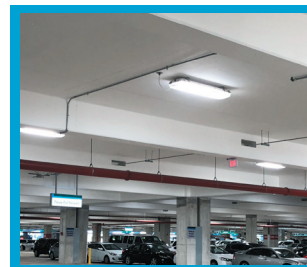
Photometrics Available at: http://www.splighting.com/SLP/photometrics_enter.html

Installation:

- Fixture can be mounted in various ways V-Hook, Pendant, Rigid Mounting Beam, Flexible Ceiling Mount, Chain, or Gripple Cable



APPLICATIONS:



PARKING GARAGE



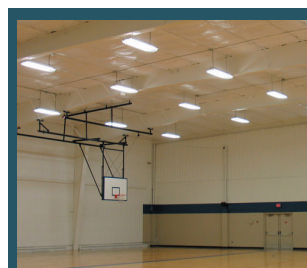
FOOD PROCESSING



INDUSTRIAL FACILITIES



WAREHOUSE



GYMNASIUMS



CAR WASHES