



CITADEL 4/4i™ GASKETED ENCLOSURES

VERY DURABLE - EASY TO CLEAN AND SERVICE - STAINLESS HARDWARE - IMPACT RESISTANT LENSES



- Refrigerated Storage
- Exterior Retail
- Gymnasiums
- Parking Garages
- Beverage & Bottling Facilities
- Livestock Containment
- Food Processing Facilities
- Construction Sites
- Manufacturing
- Freezers

Protects Lighting in Demanding Environments

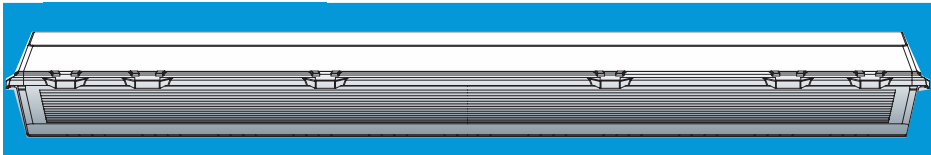
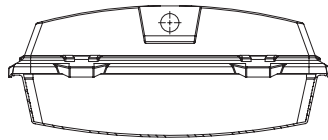


Housings

- UL 5VA Fiberglass Housing (Will not melt or burn)
- UL Approved as a Wireway and Through Wiring
- Weatherability(f1) Rated
 - Suitable for outdoor use with respect to exposure to Ultraviolet Light, Water Exposure and Immersion in accordance with UL 746

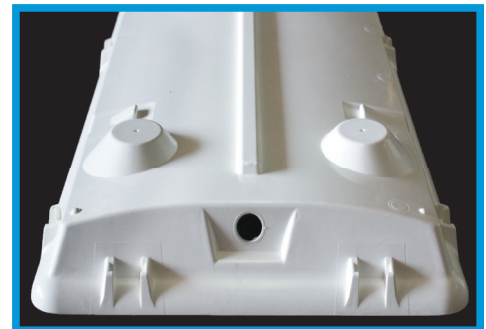
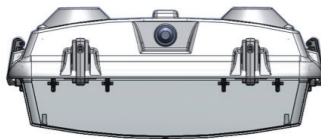
Entry Holes:

- For: 1/2" NPT / M20 fittings
- One or Both Ends



Wash Down Design : **CT4-HV5-2H**

Citadel 4 has been carefully designed to minimize horizontal surfaces and latch pockets that are prone to retaining debris.



Robust Design : **CT4I-HV5**

Citadel 4i housing is designed to be a more highly adaptable and robust housing with Advanced Mounting options

Heat Management

Available with Heat Management System for LED Applications: (Patent Pending)

- CT4 Driver Attachment Rail (Patent Pending)
- CT4i Factory Installed Ballast Attachment Rail (Patent Pending)
- Allows for Easy Ballast Mounting
- Up to 13° C cooler (*Actual Results may vary based on Ballast/Driver/LED Board configuration*)



**CT4-HV5-2H
with CT4-2XDAR**



**CT4i-HV5
with CT4-2XDAR**

CT4-2XDAR

- Holds up to 4 Drivers
- Attaches to housing with (6) **CT-2XDAR-CLIP**
- Supplies support for Pendant mounting

- 100% Impact Resistant Acrylic
 - Longevity
- UV Stabilized Polycarbonate
 - Extreme Heat or Cold
 - Maximum Impact Resistance
- Compatible with reflectors up to 2.5"/63mm deep



The Optically Clear Lens maximizes efficiency and minimizes distortion. The sides have precise lineal prisms and the ends are lightly frosted to reduce direct glare.

- Light Transmission of 91%



FR50™ Frosted—highly efficient diffusers dramatically reduces direct glare, improves LED visual performance with a smooth distribution and Light Transmission of 88%

Quality

- Stacking Ribs
 - Helps prevent damage when lenses are stacked

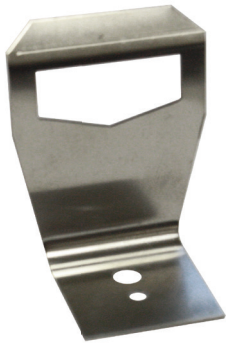


- Protective Film protects lens from scratching during shipping and installation
 - Blue: Polycarbonate
 - Clear: Acrylic



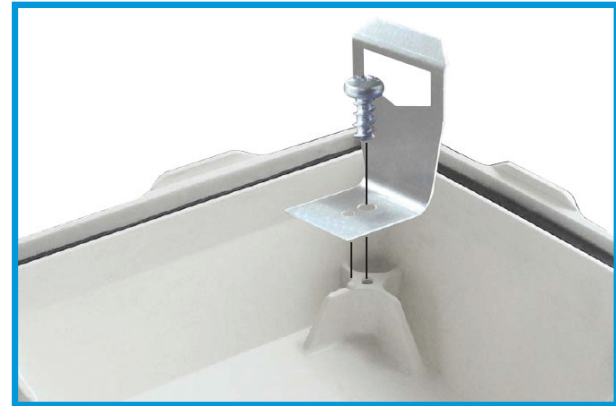


Geartray Hardware

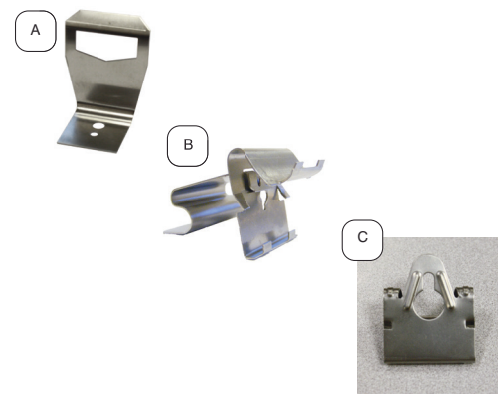
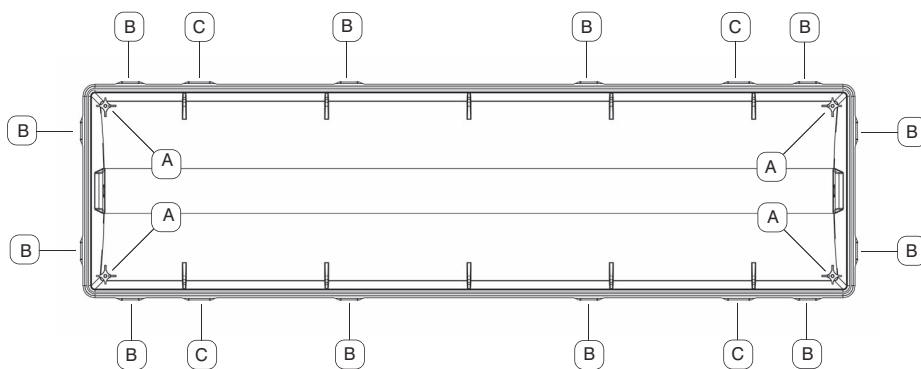


Geartray Retainer Clips

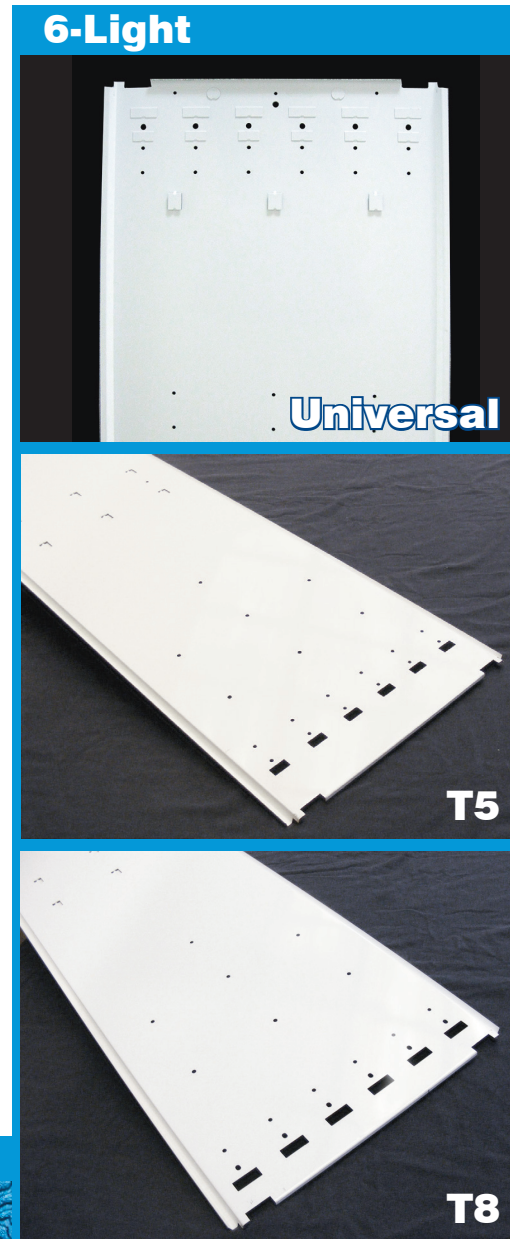
- Contains the geartray inside the housing
- 316 Stainless Steel
- 4 per housing
- Installed with CT-SCRW
- **CT4-GTRC**



Hardware Placement:



- Pre-painted Cold Rolled Steel
- Minimum 87% Total Reflectance
- Supported by 4 Stainless Steel spring fittings
- Configurations:
 - 4 or 6 lamp UNIVERSAL
 - 3, 4, 5 or 6 lamp T5
 - 3, 4, 5 or 6 lamp T8

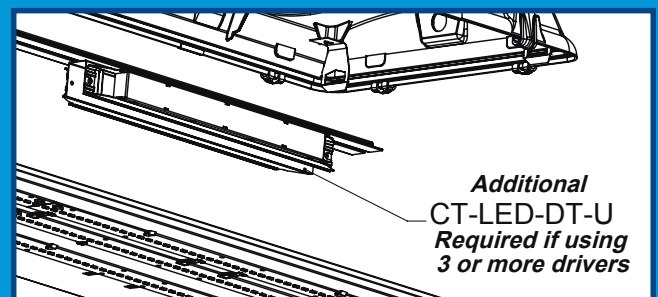


Integrate LED's into the Citadel 4 or 4i Enclosure using the Citadel Board tray in place of the geartray.

- Pre-painted Cold Rolled Steel
- Supported by 4 Stainless Steel Retainer Clips (same as the Citadel 4/4i Geartray)
- Configurations:
 - 4 Rows of ZHAGA Board Sizes **0.95" or 1.60"**
- Board Tray Retention Clips snap boards in place
- Custom Trays Available

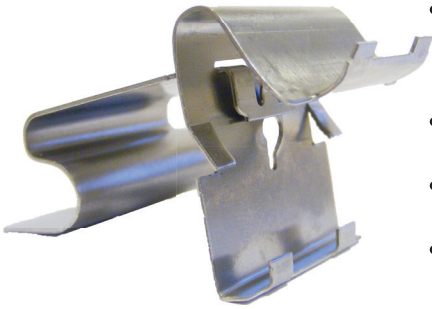


Driver Tray Option



U-Shape Driver Tray Option when using more than 3 drivers for the enclosure. **CT-LED-DT-U**

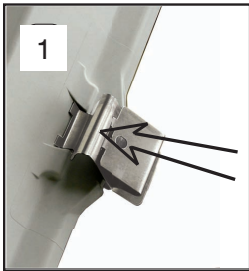
Latches



- 316 Stainless steel latches provide durability and chemical resistance
- Captive design. Will not fly off during maintenance
- 12 latches per unit ensure positive lens retention
- Easily made tamper resistant
 - #6 - 3/8" Minimum 1/2" Maximum
- **CT4-LATCHSS**

Installation:

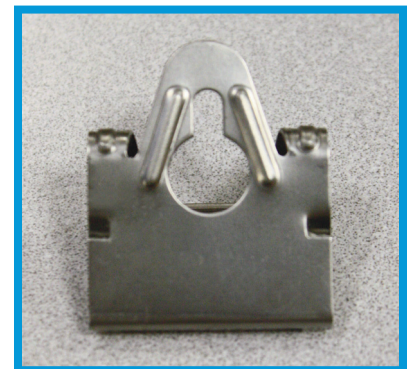
1. Slide the dove tails into the housing pocket
2. Pop the latch keeper around the housing
3. Push the latch closed



Mounting Bracket

Universal Mounting Bracket : **CT4-MB**

- No holes need to be drilled through the housing
- 316 Stainless Steel Universal Mounting Bracket works with multiple systems:
 - Ceiling Mount
 - V-Hook
 - Cable

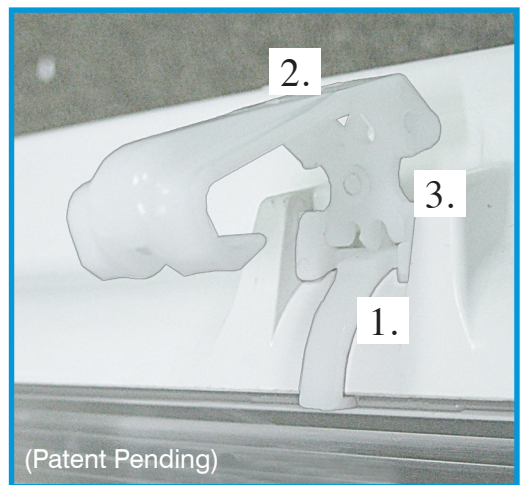
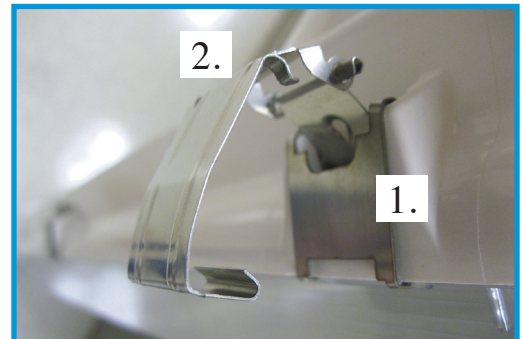


4i Latches

CITADEL

- Latch Pockets Blend with the edge of the housing for a consistently smooth edge all the way around
- 316 Stainless Steel Latches **CT4I-LATCHSS**
- Secure Locking Plastic Latches **CT4I-LATCHW**
 - Acetal Copolymer (Similar to Celcon® & Delrin®)
- 12 latches per unit ensure positive lens retention

1. Captive Keeper, latch will not fly off during maintenance
2. Holes for Optional Tamper Resistance
3. Secure Locking Plastic Latch stays open for easy maintenance

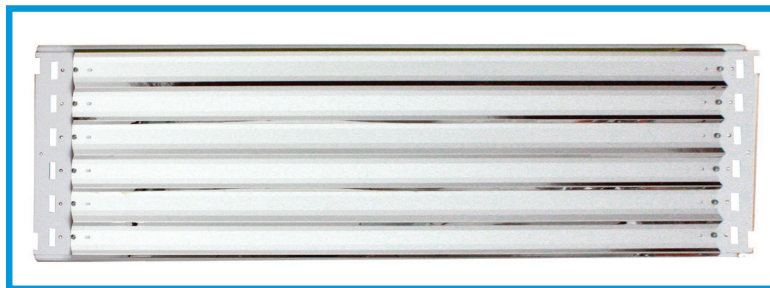


Mounting Strap

- Mounting Straps Available in 316 Stainless Steel or Zinc Plated High Strength Steel
- **CT4I-MS-SS OR CT4I-MS-ZP**
- CT4i has optional mounting systems:
 - Mounting Strap:
 - V-Hook
 - Flexible Ceiling Mount
 - Cable (Provided By Others)
 - Chain (Provided By Others)
 - Mounting Strap with Rigid Mounting Beam:
 - Rigid Ceiling Mount
 - Dual Pendant Mount (Provided By Others)

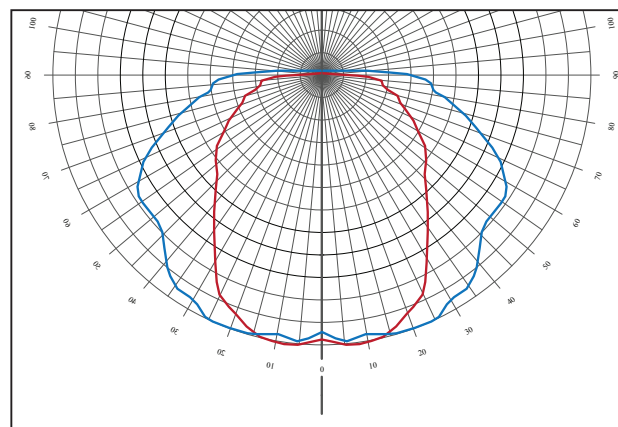
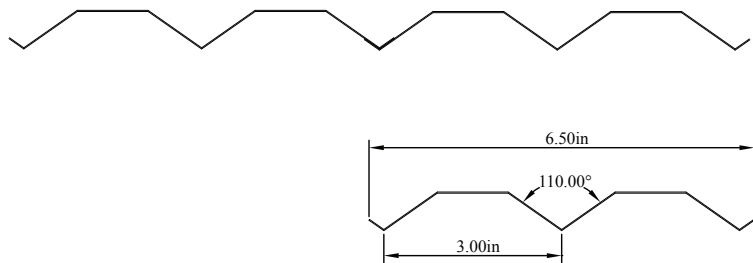


- Available for 4 or 6 light
- Enhanced Specular Finish
- Minimum 92% Reflectivity
- Single length is compatible with both T5 and T8 lamps



| Product | Length | Amount Needed for Enclosure | |
|-------------------------------|--------|-----------------------------|---------|
| | | 4 Light | 6 Light |
| Citadel 4 Universal Reflector | 45" | 2 | 3 |

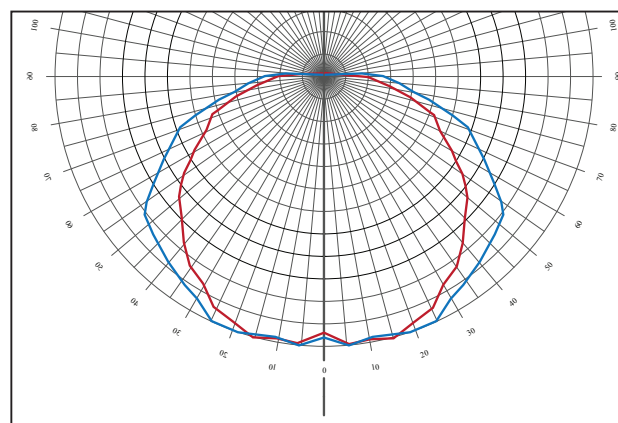
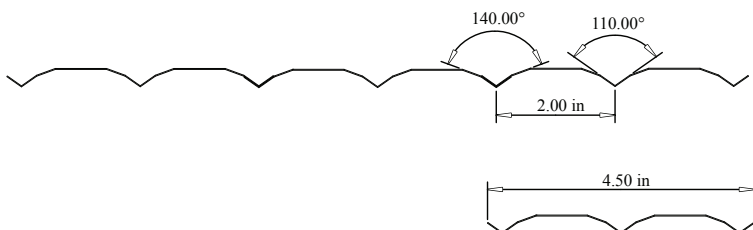
CT4-RF-4L-U



Blue: T5HO No Reflector
(19mm lamp holder)

Red: T5HO With Reflector
(19mm lamp holder)

CT4-RF-6L-U



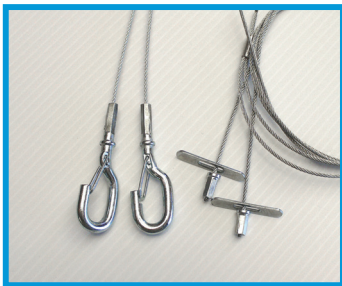
Mounting Options

CT4-VHOOK:

316 Stainless Steel V-hook.
UL rated for 4X fixture weight.
Maximum fixture weight of 23lbs.



Cable Mount

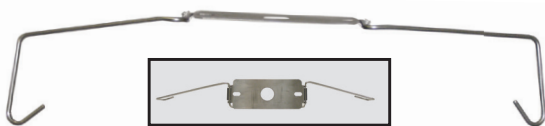


Supplied by Others



Flexible Ceiling Mount:

316 Stainless Steel Ceiling Mount
attaches directly to the ceiling.



CT4-CM1.25

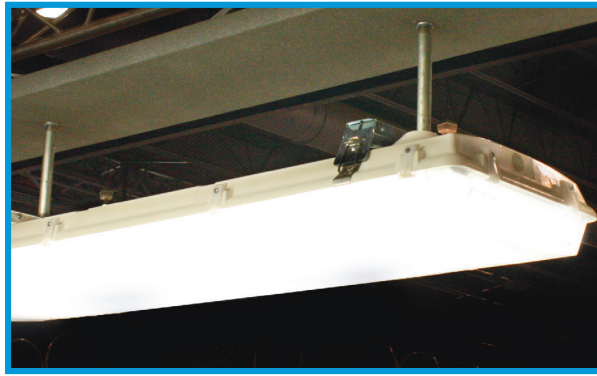
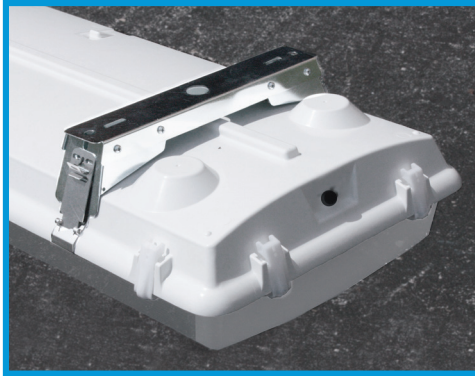


1.25" Between Ceiling and Enclosure

4i CITADEL Mounting

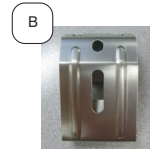
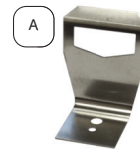
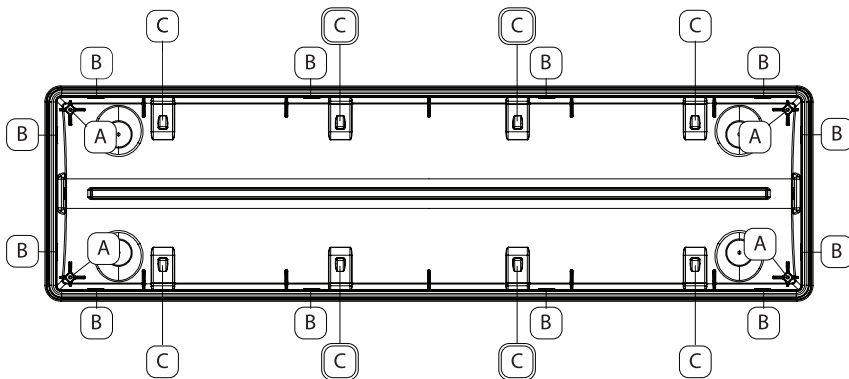
Rigid Mounting Beam

- Patented
- 316 Stainless Steel or Zinc Plated HSLA
- **CT4I-MB-SS OR CT4I-MB-ZP**



Only Available for CT4i

4i CITADEL Hardware Placement:



(C) Optional Spacing



Certifications



UL

NSF

NEMA 4X

IP65

IP66

IP67

RoHS

PSI 1500

SLP Guardian Seal

Patented



UL Listing (FLR): File E319249

UL Listing (LED): File E363909

UL Recognized Components: File E215168

Components Tested and Certified
by NSF International

NEMA 4X



Offers 34% more contact between the lens and the gasket. Guardian Seal™ is a unique combination of our Injection Molded lens features and high performance “poured in place” gasket. This provides the most advanced sealing system available.



On Specified Configurations
Visit www.designlights.org/qpl for Details

HEAT
Testing

The Citadel 4 and Citadel 4i have been subjected to various testing to ensure a superior product. Even though the material will withstand a wide temperature range, it is incumbent on others to verify that the lamp/ballast/LED driver combination is appropriate for the ambient temperature of the application.



SLP LIGHTING
1400 S. OLD HIGHWAY 141
FENTON, MO 63026 USA
PHONE: 800.248.0224 / 636.600.4084
FAX: 636.600.4108
SALES@SLPLIGHTING.COM
WWW.SLPLIGHTING.COM

V08292018