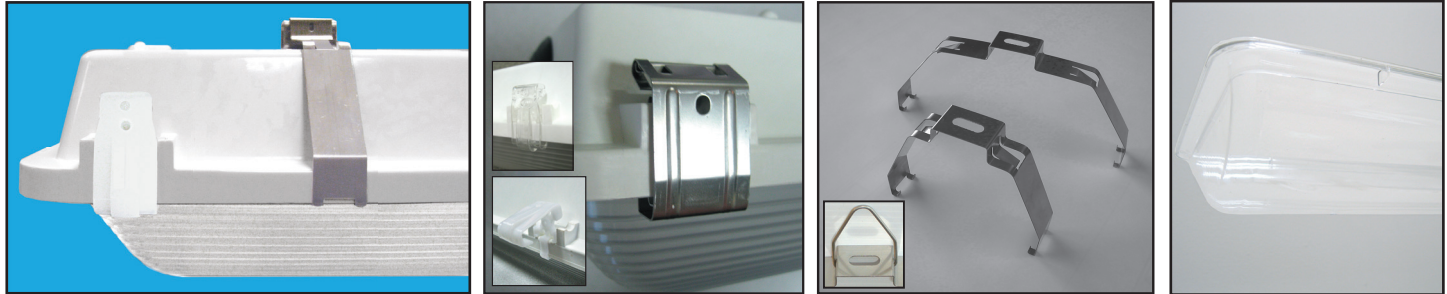
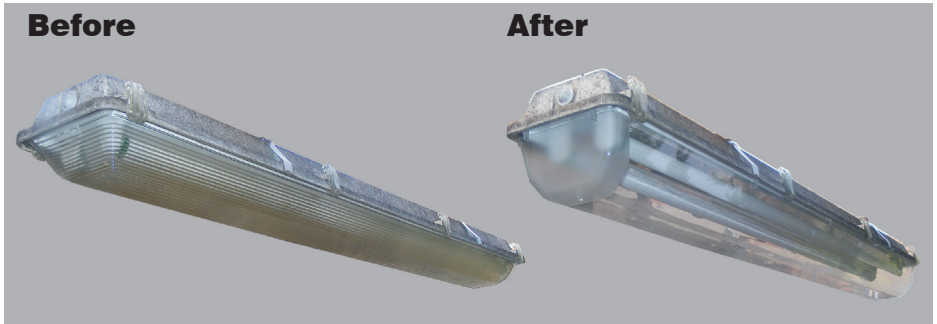


# CITADEL 2™ GASKETED ENCLOSURE

## REPLACEMENT COMPONENTS

Update your SLP Lighting Citadel 2 with new replacement components: Lenses, Latches Mounting Brackets.



## FEATURES & BENEFITS:

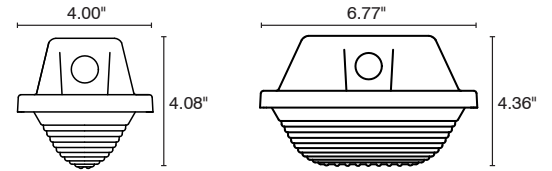
- Impact Resistant Acrylic Lens
- Stainless Steel Mounting Brackets and Accessories
- Captive Latches available in Stainless Steel, Clear Polycarbonate or White
- Wide and Basic Reflectors

CITADEL 2™ MOUNTING BRACKETS		MATERIAL	PART #	PCS/BAG	PCS/CTN	WT/CTN	
<b>NARROW (1 LAMP)</b>	NARROW MOUNTING BRACKET (2 PER HOUSING)	STAINLESS STEEL	CT2-MB-1L		250	9LBS/4,1KG	
	PRE PACKAGED 2 PER BAG	STAINLESS STEEL	CT2-MB-1L-2	2	250		
<b>WIDE (2 OR 3 LAMP)</b>	WIDE MOUNTING BRACKET (2 PER HOUSING)	STAINLESS STEEL	CT2-MB-2L		400	18KLS/8,2KG	
	PRE PACKAGED 2 PER BAG	STAINLESS STEEL	CT2-MB-2L-2	2	250	31LBS/14.06KG	
	DUAL PENDANT MOUNT BRACKET (2 PER HOUSING)	STAINLESS STEEL	CT2-MB-2L-MCH		500		
	45 DEGREE MOUNTING BRACKET (2 PER HOUSING)	STAINLESS STEEL	CT2-MB-2L45				
	45 DEGREE MOUNTING BRACKET PACK	STAINLESS STEEL	CT2-MB-2L45-2	2			
MOUNTING ACCESSORIES		MATERIAL	PART #	PCS/BAG	PCS/CTN	WT/CTN	
	CHAIN HANG: MOUNTING BAIL (2 PER HOUSING)	STAINLESS STEEL	CT-BAIL	100	5000	27LBS/12,2KG	
CITADEL 2™ HARDWARE			PART #	PCS/BAG	PCS/CTN	WT/CTN	
GEARTRAY RETAINER CLIPS			CT-RC	200	2400	16LBS/7,3KG 41KLS/18,6KG	
GEARTRAY RETAINER CLIP SCREWS (100 PER BAG)			CT-SCRW	100	10,000	52LBS/23,6KG	
1/2" HUB			CT-DCB-50	200		30LBS/13.6KG	
3/4" HUB			CT-DCB-75	100		20LBS/9.07KG	
GEARTRAY SAFETY STRAPS (100 PER BAG)			CT-SST	100	10,000	17LBS/7,7KG	
LENS TETHER (20 PER BAG)			CT-LT12	20	2000	11LBS/7KG	
GASKET AND SHIM (100 PER BAG)			CT-DA5	100	1000		
ENDPLUGS			CT-ENDPLUG-B	200	2000	22LBS/10KG	
CITADEL 2™ REFLECTORS			Compatible with SLP's Lens				
DESIGN	LENGTH	Part #	DIRA/DP	GIRA/CP	LIRA	Carton QTY	Carton Weight
BASIC	21.0"	CT2-RF-2L2-B	✓	✓			
BASIC	44.5"	CT2-RF-2L4-B	✓	✓	✓	750	320
WIDE	44.5"	CT2-RF-2L4-W			✓	375	180

# CITADEL 2™ GASKETED ENCLOSURE

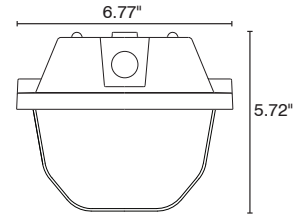
## Lineal Ribbed Diffusers for the Citadel 2™

- Acrylic (DIRA) or Polycarbonate (DP)
- 2, 4 and 8 Foot Lengths
- Wide: 1.92" x 6.40" or Narrow: 1.86" x 3.62" (4' length only)



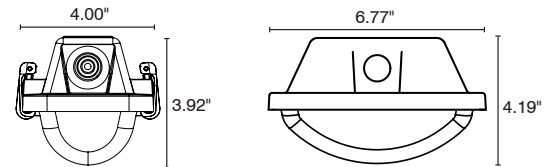
## Deep Lens for the Citadel 2™

- Designed Specifically for use with Reflectors
- Injection Molded with 100% Impact Resistant Acrylic (LIRA)
- 2, 4 and 8 Foot Lengths
- Wide: 3.50" Deep x 6.40"
- Optically Clear with Frosted Ends



## Shallow Lens for the Citadel 2™

- Designed for use with LED's
- Acrylic (CIRA) or Polycarbonate (CP)
- Optically Clear
- 2, 4 and 8 Foot Lengths
- Wide: 1.92"x 6.40" or Narrow: 1.86" x 3.60" (4' length only)



## CITADEL 2 DIFFUSERS & LENSES:

WIDTH	LENGTH	DESIGN	MATERIAL	PART # FOR CLEAR	PART # FOR FR50™ FROSTED	PCS/CTN	FULL SKID QTY	WT/CTN
NARROW	4'	LINEAL RIBBED	POLYCARBONATE	CT2-DP-1L4	CT2-DP-1L4-FR50	30	180	25LBS/11,3KG
		LINEAL RIBBED	IMPACT RESISTANT ACRYLIC	CT2-DIRA-1L4	CT2-DIRA-1L4-FR50	30	360	25LBS/11,3KG
		SMOOTH	POLYCARBONATE	CT2-CP-1L4	CT2-CP-1L4-FR50	40	360	41LBS/18.14KG
		SMOOTH	IMPACT RESISTANT ACRYLIC	CT2-CIRA-1L4	CT2-CIRA-1L4-FR50	40	360	41LBS/18.14KG
WIDE	2'	LINEAL RIBBED	POLYCARBONATE	CT2-DP-2L2	CT2-DP-2L2-FR50	20	180	22LBS/9,97KG
		LINEAL RIBBED	IMPACT RESISTANT ACRYLIC	CT2-DIRA-2L2	CT2-DIRA-2L2-FR50	20	180	21LBS/9,5KG
		SMOOTH	POLYCARBONATE	CT2-CP-2L2	CT2-CP-2L2-FR50			
		SMOOTH	IMPACT RESISTANT ACRYLIC	CT2-CIRA-2L2	CT2-CIRA-2L2-FR50			
		DEEP	IMPACT RESISTANT ACRYLIC	CT2-LIRA-2L2	CT2-LIRA-2L2-FR50	20	180	21LBS/9,5KG
	4'	LINEAL RIBBED	POLYCARBONATE	CT2-DP-2L4	CT2-DP-2L4-FR50	20	240	21LBS/9,5KG
		LINEAL RIBBED	IMPACT RESISTANT ACRYLIC	CT2-DIRA-2L4	CT2-DIRA-2L4-FR50	20	240	38LBS/17,2KG
		SMOOTH	POLYCARBONATE	CT2-CP-2L4	CT2-CP-2L4-FR50	20	240	50LBS/22,6KG
		SMOOTH	IMPACT RESISTANT ACRYLIC	CT2-CIRA-2L4	CT2-CIRA-2L4-FR50	20	240	27LBS/12,2KG
		DEEP	IMPACT RESISTANT ACRYLIC	CT2-LIRA-2L4	CT2-LIRA-2L4-FR50	20	240	28LBS/12,7KG
	8'	LINEAL RIBBED	IMPACT RESISTANT ACRYLIC	CT2-DIRA-2L8	CT2-DIRA-2L8-FR50	10	240	48LBS/21,7KG
		DEEP	IMPACT RESISTANT ACRYLIC	CT2-LIRA-2L8	CT2-LIRA-2L8-FR50	10	120	52LBS/23,6KG
		SMOOTH	POLYCARBONATE	CT2-CP-2L8	CT2-CP-2L8	20	240	74LBS/33,5KG
		SMOOTH	IMPACT RESISTANT ACRYLIC	CT2-CIRA-2L8	CT2-CIRA-2L8-FR50	20	240	74LBS/33,5KG

## CITADEL 2™ LATCHES

		MATERIAL	PART #	PCS/BAG	PCS/CTN	WT/CTN
BULK	CITADEL 2 STAINLESS LATCH	316 STAINLESS	CT2-LATCHSS	200	2000	62LBS
	WHITE SECURE LOCKING PLASTIC LATCH	ACETAL COPOLYMER	CT2-LATCHW	200	1600	25LBS/11.34KG
	CLEAR SECURE LOCKING PLASTIC LATCH	POLYCARBONATE	CT2-LATCHCC	200	1600	
2'	WHITE SECURE LOCKING PLASTIC LATCH	ACETAL COPOLYMER	CT2-LATCH2W	6	100	
	CLEAR SECURE LOCKING PLASTIC LATCH	POLYCARBONATE	CT2-LATCH2CC	6	100	
4'	LATCH BAG WITH ENDPLUGS	316 STAINLESS	CT2-LATCH4SS	8	175	37LBS/16,9KG
	WHITE SECURE LOCKING PLASTIC LATCH BAG WITH ENDPLUGS	ACETAL COPOLYMER	CT2-LATCH4W	8	100	
	CLEAR SECURE LOCKING PLASTIC LATCH BAG WITH ENDPLUGS	POLYCARBONATE	CT2-LATCH4CC	8	100	
8'	LATCH BAG WITH ENDPLUGS	316 STAINLESS	CT2-LATCH8SS	14	100	35LBS/15,9KG
	WHITE SECURE LOCKING PLASTIC LATCH BAG WITH ENDPLUGS	ACETAL COPOLYMER	CT2-LATCH8W	14	150	
	CLEAR SECURE LOCKING PLASTIC LATCH BAG WITH ENDPLUGS	POLYCARBONATE	CT2-LATCH8CC	14	80	

Product offering and specifications subject to change without notice.