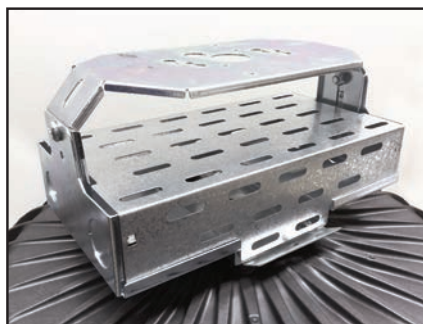


# CircLED

The CircLED™ is a thermally conductive molded polymer high bay, offering a lighter weight alternative to die cast fixtures, while thermally managing up to a 200 Watt LED Engine.



Lens Gasket  
required for  
IP66 Rating

## APPLICATIONS:

- Industrial
- Auditoriums
- Gymnasiums
- Cold Storage
- Warehouse
- Factory
- Exhibition Hall
- Distribution Centers

## CERTIFICATIONS

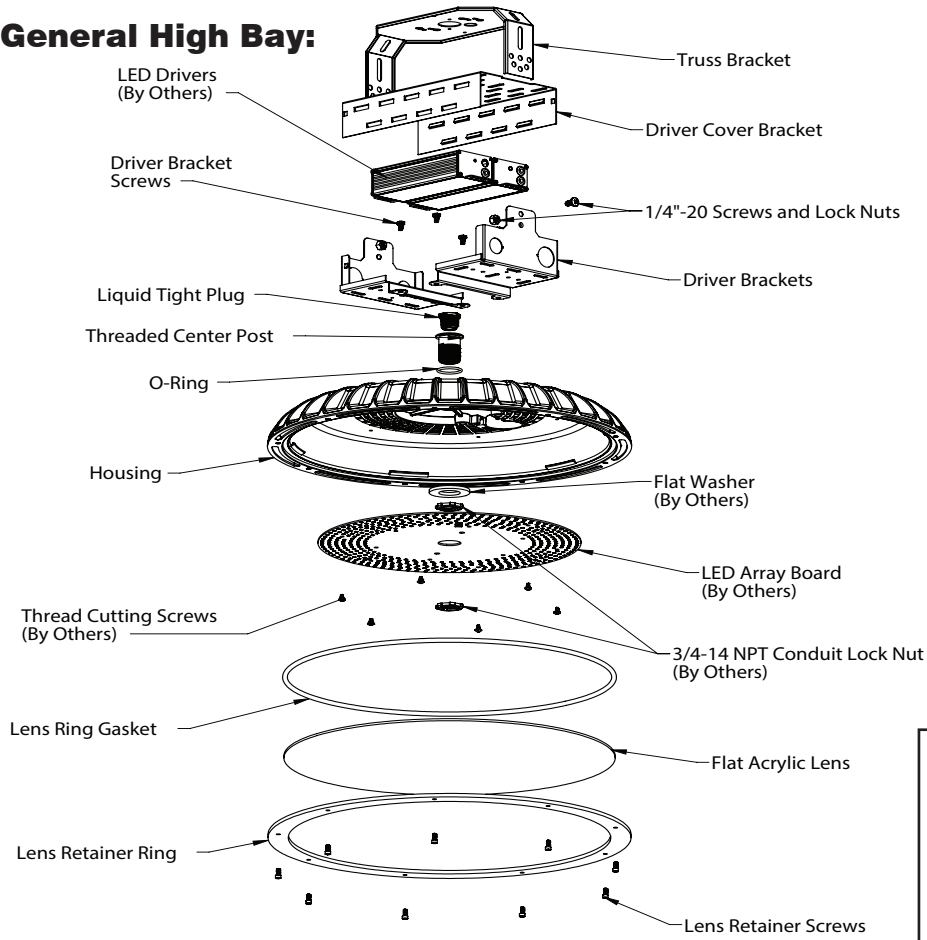
- UL Wet Location
- IP65
- IP66
- ROHS

## FEATURES & BENEFITS:

- Designed for LEDS
- Charcoal Black in color so post painting is not needed
- Lightweight Design
- Easy Installation is contractor friendly
- Zinc Plated Steel Mounting Bracket supports: Pendant, Direct to Ceiling, Wall or Trunnion options
- Dimples in the driver brackets offer locking points for angled mounting
- 18" Diameter
- Frosted acrylic lens provides uniform glare-free lighting from the metal core LED array module
- For use with Round LED Module
- Accommodates Occupancy Sensor
- U.S. manufactured CircLED™

Product offering and specifications subject to change without notice.

**CircLED™ General High Bay:**



COMPONENT	STANDARD MATERIAL	PIECES REQUIRED PER ASSEMBLY	AVAILABLE OPTIONS
HOUSING	THERMALLY CONDUCTIVE PLASTIC	1	
THREADED CENTER POST	ALUMINUM	1	
O-RING	BUNA-N	1	REQUIRED FOR IP65 & IP66 RATING
LIQUID TIGHT PLUG	NYLON	1	
SAFETY CABLE BRACKET	GALVANIZED STEEL	1	
DRIVER BRACKET	ZINC PLATED STEEL	2	
DRIVER BRACKET SCREW		4	
DRIVER COVER	GALVANIZED STEEL	1	
TRUSS BRACKET	ZINC PLATED STEEL	1	
TRUSS SCREW (1/4"-20)		2	
TRUSS LOCKNUT (1/4"-20)		2	
CONDUIT LOCKNUT		2	
THREAD CUTTING SCREWS		6	
LENS RING GASKET	TPV	1	REQUIRED FOR IP65 & IP66 RATING
LENS RETAINER SCREWS		9	
DROP LENS REQUIRED PARTS:			
DROP LENS	ACYLIC OR POLYCARBONATE	1	CLEAR OR FROSTED
DROP LENS GASKET		1	
FLAT LENS REQUIRED PARTS:			
FLAT LENS	ACYLIC OR POLYCARBONATE	1	CLEAR OR FROSTED
FLAT LENS GASKET		1	
LENS RETAINER RING		1	

Product offering and specifications subject to change without notice.

**CircLED™ COMPONENTS:****CircLED™ HOUSING EXTRUSIONS**

DIAMETER	DESCRIPTION	PART #	PCS/CTN	WT/CTN	FULL SKID QTY.
18"	THERMAL CONDUCTIVE PLASTIC HOUSING	CLD-TCP-18LH	10		

**CircLED™ LENS & ACCESSORIES**

DESCRIPTION	PART #	PCS/CTN	WT/CTN	FULL SKID QTY.
FLAT FROSTED ACRYLIC LENS 118 THICK	CLD-P95-118-16.375			
FLAT CLEAR ACRYLIC LENS	CLD-SH-CA-118-16.375			
DROP LENS FROSTED ACRYLIC	CTR-LENS-18-ACR-FR50			
DROP LENS CLEAR ACRYLIC	CTR-LENS-18-ACR			

\*POLYCARBONATE LENSES AVAILBLE UPON REQUEST - CONTACT SLP DIRECTLY FOR INFORMATION

LENS RETAINER RING - THERMAL CONDUCTIVE PLASTIC	CLD-LENS-RNG			
LENS RETAINER SCREW	CLD-TLSCRW-832-375			
FLAT LENS RING GASKET	CLD-LENS-GSKT			
DROP LENS GASKET	CLD-DPLENS-GSKT			
WHITE WALL DIFFUSE REFLECTOR	CLD-WW-DR			

**CircLED™ HARDWARE**

	MATERIAL	PART #	PCS/BAG	PCS/CTN	WT/CTN
THREADED CENTER POST	ALUMINUM	CLD-CTR-PST			
O-RING	BUNA-N	SLP-ORING			
LIQUID TIGHT PLUG	NYLON	SLP-LTP-50			
THREAD CUTTING SCREWS FOR LED ARRAY ATTACHMENT		SLP-SCRW-TC8312			
3/4-14 NPT CONDIT LOCKNUT		SLP-SLN75			

**CircLED™ MOUNTING**

	MATERIAL	PART #	PCS/BAG	PCS/CTN	WT/CTN
TRUSS BRACKET	ZINC PLATED STEEL	CLD-BKT-TRS			
TRUSS SCREW(1/4"-20)	ZINC PLATED STEEL	CLD-SCRW-25-20			
TRUSS LOCKNUT (1/4"-20)	ZINC PLATED STEEL	CLD-LNUT-25-20			
DRIVER BRACKET	ZINC PLATED STEEL	CLD-BKT-BAS			
DRIVER BRACKET SCREW	ZINC PLATED STEEL	CLD-SEMS-10-24			

**MOUNTING ACCESSORIES**

	MATERIAL	PART #	PCS/BAG	PCS/CTN	WT/CTN
DRIVER COVER	GALVANIZED STEEL	CLD-BKT-CVR			
SAFETY CABLE BRACKET	GALVANIZED STEEL	CLD-BKT-SAF			
INSPECTION COVER PLATE	GALVANIZED STEEL	CLD-INSP-PLT			
3/4" HUB FOR PENDANT	DIE CAST	CT-DCB-75	100		20LBS/9.07KG
316 STAINLESS STEEL HOOK	316 STAINLESS STEEL	SLP-HOOK-SS-NH75			

Product offering and specifications subject to change without notice.