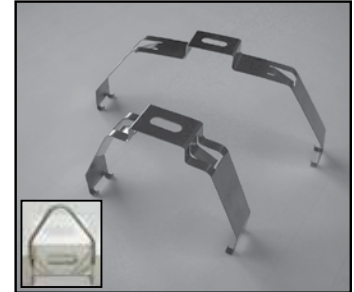
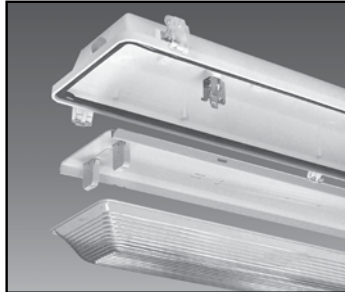


CITADEL 2™ GASKETED ENCLOSURE

OEM COMPONENTS:

CITADEL 2 FLUORESCENT:

Second generation gasketed enclosures. CITADEL 2™ offers more versatility and benefits than any other weatherproof enclosure offered in North America.



APPLICATIONS:

- Food Processing Facilities
- Commercial Kitchens
- Breweries
- Industrial Facilities
- Livestock Containment Buildings
- Parking Garages
- Under Awnings
- Car Washes

CERTIFICATIONS

- UL FILE E215168
- NSF International
- IP65, IP66, IP67
- Nema 4X
- RoHS
- PS1500
- SLP Guardian Seal

FEATURES & BENEFITS:

- Low profile designed for T8 and T5 lamps
- Three lengths (2', 4', & 8')
- Two housing widths (4" & 6-3/4")
- Poured in place gasket and cam latches seal the enclosures from most hostile environments
- Diffusers resist breakage to reduce replacement and maintenance costs
- Optically Clear Lens for energy efficiency; designed for use with reflectors
- FR50™ Frosted Lenses for smooth distribution
- Utilizes off the shelf 1/2" fittings
- Tamper resistant latches: Patented Clear or White Captive, Clear Polycarbonate or 316 Stainless Steel

CITADEL 2's™ Mounting options offer a huge advantage over traditional enclosures

- Economical Mounting System can provide dramatic savings on the installation labor
- Stainless steel mounting hardware
- No holes ever have to be drilled through the housing for installation
- Stainless steel bail available for chain hung installations
- Installation time is dramatically reduced, providing lower installation costs

Product offering and specifications subject to change without notice.

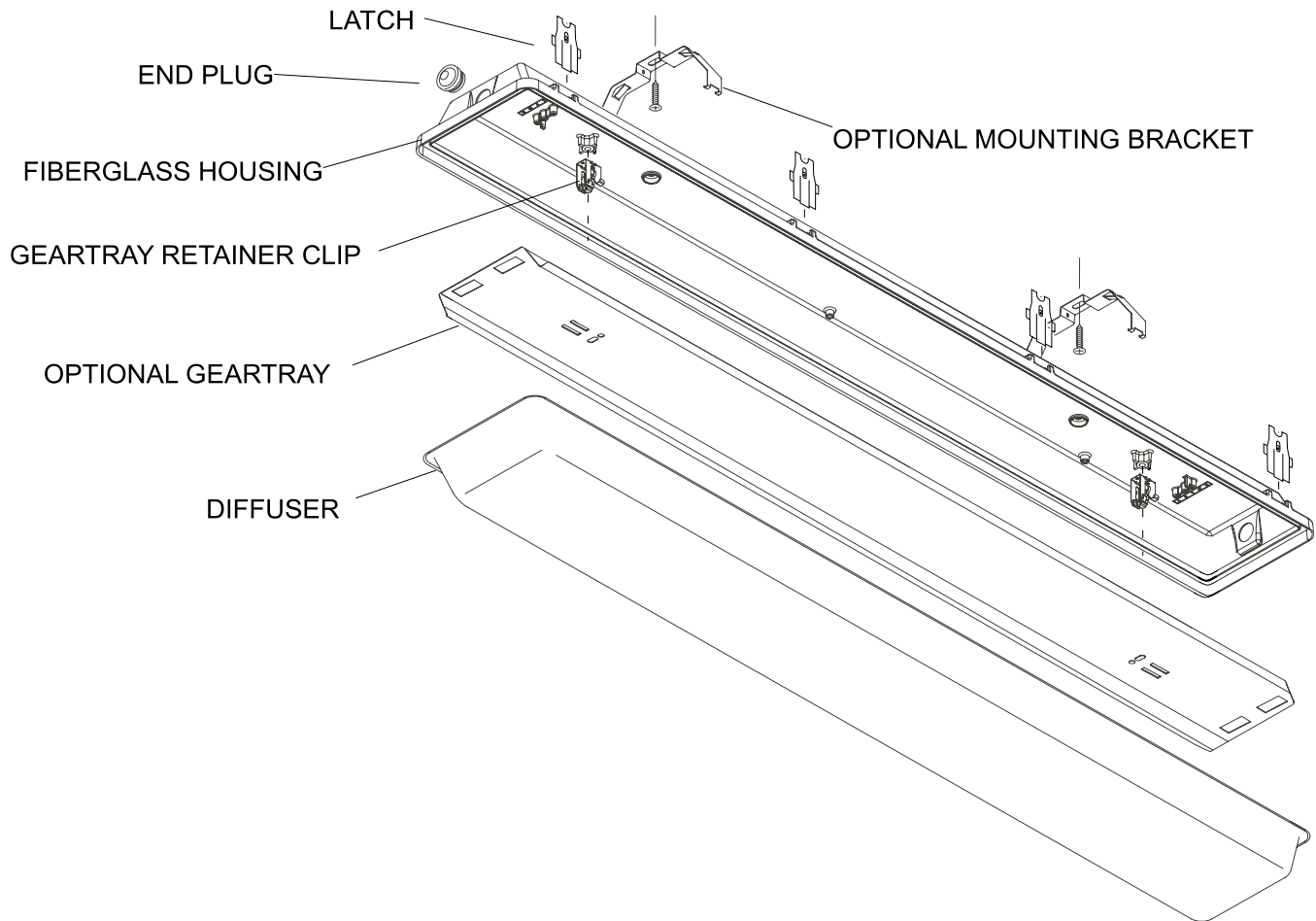


SLP LIGHTING
www.splighting.com

V11012017

1400 S. Old Highway 141
Fenton, MO 63026
636-600-4084

CITADEL 2™ GASKETED ENCLOSURE



ASSEMBLY GUIDE:

| COMPONENT | STANDARD MATERIAL | PIECES REQUIRED PER ASSEMBLY | | | AVAILABLE OPTIONS |
|------------------------|---|------------------------------|-------|-------|--|
| | | 2' | 4' | 8' | |
| HOUSING | UL RATED: 5VA(f1) FRP | 1 | 1 | 1 | HOUSING FOR SINGLE OR DUAL PENDANT MOUNTING |
| DIFFUSER | LINEAL RIBBED: PC OR IMPACT RESISTANT ACRYLIC (f1) MATERIAL | 1 | 1 | 1 | LINEAL RIBBED DIFFUSER (DIRA/DP) DEEP LENS (LIRA) SHALLOW LENS (CIRA/CP) ALL AVAILABLE IN CLEAR OR FR50 FROSTED |
| GEARTRAY | CRS: MIN 87% REFLECTANCE | 1 | 1 | 1 | T5, T8, T8HO, UNIVERSAL |
| GEARTRAY RETAINER CLIP | STAINLESS STEEL | 2 | 2 | 3 | NA |
| RETAINER CLIP SCREW | 100 PCS / BAG | 2 | 2 | 3 | NA |
| GEARTRAY SAFETY STRAP | 100 PCS / BAG | 2 | 2 | 2 | NA |
| LATCHES | POLYCARBONATE | 1 BAG | 1 BAG | 1 BAG | 316 STAINLESS STEEL LATCHES SECURE LOCKING PLASTIC (POM) |
| ENDPLUG | INCLUDED IN LATCH BAG | 1 | 1 | 1 | NA |
| MOUNTING BRACKET | STAINLESS STEEL | 2 | 2 | 2 | DRILLED FOR PENDANT OPTIONAL BAIL ACCESSORY 45 DEGREE MOUNTING BRACKET |

Product offering and specifications subject to change without notice.



SLP LIGHTING
www.splighting.com

V11012017

1400 S. Old Highway 141
Fenton, MO 63026
636-600-4084

CITADEL 2™ GASKETED ENCLOSURE

Citadel 2™ Components for FLUORESCENT:

| CITADEL 2™ HOUSINGS | | | | | | |
|-------------------------------|--|---------------------------------------|--------------------|-----------------|--------------|------------------------------|
| WIDTH | LENGTH | MATERIAL | PART # | PCS/CTN | WT/CTN | FULL SKID QTY. |
| NARROW (1 LAMP) | 4' | 5VA-F1 FIBERGLASS (UL) | CT2-HV5-1L4 | 30 | 57LBS/34,5KG | 180 |
| WIDE (2 OR 3 LAMP) | 2' | 5VA-F1 FIBERGLASS (UL) | CT2-HV5-2L2 | 20 | 75LBS/34KG | 240 |
| | | 5VA-F1 FIBERGLASS (UL) SINGLE PENDANT | CT2-HV5-2L2-CH1.25 | | | |
| | 4' | 5VA-F1 FIBERGLASS (UL) | CT2-HV5-2L4 | 20 | 57LBS/25,9KG | 240 |
| | | 5VA-F1 FIBERGLASS (UL) SINGLE PENDANT | CT2-HV5-2L4-CH1.25 | | | |
| | | 5VA-F1 FIBERGLASS (UL) DUAL PENDANT | CT2-HV5-2L4-2H.875 | | | |
| 8' | 5VA-F1 FIBERGLASS (UL) | CT2-HV5-2L8 | 60 | 420LBS/190,5KG | 240 | |
| CITADEL 2™ GEARTRAYS | | | | | | |
| WIDTH | LENGTH | LAMP CONFIGURATION | FINISH | PART # | PCS/CTN | FULL SKID QTY. |
| NARROW (1 LAMP) | 4' | KO's FOR WITHER 1 T5 OR 1 T8 | WHITE ENAMEL | CT2-GT-1L4-U | 100 | 500 |
| WIDE (2 OR 3 LAMP) | 2' | KO's FOR 2 T5 OR 2 T8, KO'S FOR 3RD | WHITE ENAMEL | CT2-GT-2L2-U | | 500 |
| | | PUNCHED FOR 2 T5, KO'S FOR 3RD | WHITE ENAMEL | CT2-GT-2L4-T5 | | 500 |
| | 4' | PUNCHED FOR 2 T8, KO'S FOR 3RD | WHITE ENAMEL | CT2-GT-2L4-T8 | | 500 |
| | | KO's FOR UP TO 3 T5 OR 3 T8 | WHITE ENAMEL | CT2-GT-2L4-U | | 500 |
| | | PUNCHED FOR 2 T8HO | WHITE ENAMEL | CT2-GT-2L4-T8HO | | 500 |
| | 8' | PUNCHED FOR 4 4' T5, KO'S FOR 2 MORE | WHITE ENAMEL | CT2-GT-2L8-T5 | | 500 |
| | | PUNCHED FOR 4 4' T8, KO'S FOR 2 MORE | WHITE ENAMEL | CT2-GT-2L8-T8 | | 500 |
| | | KO's FOR UP TO 6 4' T5 OR 6 4' T8 | WHITE ENAMEL | CT2-GT-2L8-U | | 500 |
| | | PUNCHED FOR 2 8' T8HO | WHITE ENAMEL | CT2-GT-2L8-T8HO | | 500 |
| CITADEL 2™ MOUNTING BRACKETS | | | | | | |
| | | MATERIAL | PART # | PCS/BAG | PCS/CTN | WT/CTN |
| NARROW (1 LAMP) | NARROW MOUNTING BRACKET (2 PER HOUSING) | STAINLESS STEEL | CT2-MB-1L | | 250 | 9LBS/4,1KG |
| | PRE PACKAGED 2 PER BAG | STAINLESS STEEL | CT2-MB-1L-2 | 2 | 250 | |
| WIDE (2 OR 3 LAMP) | WIDE MOUNTING BRACKET (2 PER HOUSING) | STAINLESS STEEL | CT2-MB-2L | | 400 | 18KLBS/8,2KG |
| | PRE PACKAGED 2 PER BAG | STAINLESS STEEL | CT2-MB-2L-2 | 2 | 250 | 31LBS/14.06KG |
| | DUAL PENDANT MOUNT BRACKET (2 PER HOUSING) | STAINLESS STEEL | CT2-MB-2L-MCH | | 500 | |
| | 45 DEGREE MOUNTING BRACKET (2 PER HOUSING) | STAINLESS STEEL | CT2-MB-2L45 | | | |
| | 45 DEGREE MOUNTING BRACKET PACK | STAINLESS STEEL | CT2-MB-2L45-2 | 2 | | |
| MOUNTING ACCESSORIES | | | | | | |
| | | MATERIAL | PART # | PCS/BAG | PCS/CTN | WT/CTN |
| | CHAIN HANG: MOUNTING BAIL (2 PER HOUSING) | STAINLESS STEEL | CT-BAIL | 100 | | 27LBS/12,2KG |
| WIDE (2 OR 3 LAMP) | 2' PENDANT MOUNT SUPPORT TRAY | WHITE ENAMEL | CT2-2L-PMDT | | | |
| | 4' SINGLE OR DUAL PENDANT MOUNT SUPPORT TRAY | WHITE ENAMEL | CT2-2L4-2XDAR | | | |
| CITADEL 2™ HARDWARE | | | | | | |
| | | | PART # | PCS/BAG | PCS/CTN | WT/CTN |
| | GEARTRAY RETAINER CLIPS | | CT-RC | 200 | 2400 | 16LBS/7,3KG 41KLBS/18,6KG |
| | GEARTRAY RETAINER CLIP SCREWS (100 PER BAG) | | CT-SCRW | 100 | 10,000 | 52LBS/23,6KG |
| | 1/2" HUB | | CT-DCB-50 | 200 | | 30LBS/13,6KG |
| | 3/4" HUB | | CT-DCB-75 | 100 | | 20LBS/9,07KG |
| | GEARTRAY SAFETY STRAPS (100 PER BAG) | | CT-SST | 100 | 10,000 | 17LBS/7,7KG |
| | LENS TETHER (20 PER BAG) | | CT-LT12 | 20 | 2000 | 11LBS/7KG |
| | GASKET AND SHIM (100 PER BAG) | | CT-DA5 | 100 | 1000 | |
| | ENDPLUGS | | CT-ENDPLUG-B | 200 | 2000 | 22LBS/10KG |

Product offering and specifications subject to change without notice.



SLP LIGHTING
www.splighting.com

V11012017

1400 S. Old Highway 141
Fenton, MO 63026
636-600-4084

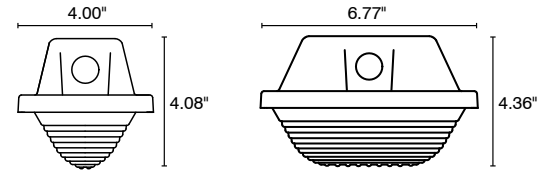
CITADEL 2™ GASKETED ENCLOSURE

DIFFUSERS AND OPTICALLY CLEAR LENSES:

- All Available in FR50™ Frosted Material
- Integral Posts for Lens Safety Tether
- SLP Exclusive Guardian Seal™

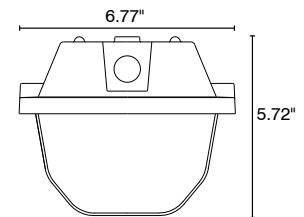
Lineal Ribbed Diffusers for the Citadel 2™

- Acrylic (DIRA) or Polycarbonate (DP)
- 2, 4 and 8 Foot Lengths
- Wide: 1.92" x 6.40" or Narrow: 1.86" x 3.62"



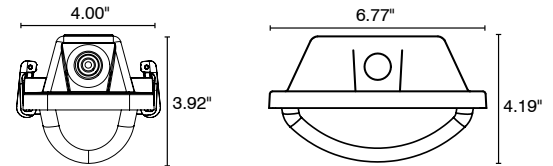
Deep Lens for the Citadel 2™

- Designed Specifically for use with Reflectors
- Injection Molded with 100% Impact Resistant Acrylic (LIRA)
- 2, 4 and 8 Foot Lengths
- Wide: 3.50" Deep x 6.40"
- Optically Clear with Frosted Ends



Shallow Lens for the Citadel 2™

- Designed for use with LED's
- Acrylic (CIRA) or Polycarbonate (CP)
- Optically Clear
- 4 Foot Length Only
- Wide: 1.92"x 6.40" or Narrow: 1.86" x 3.60"



CITADEL 2 DIFFUSERS & LENSES:

| WIDTH | LENGTH | DESIGN | MATERIAL | PART # FOR CLEAR | PART # FOR FR50™ FROSTED | PCS/CTN | FULL SKID QTY | WT/CTN |
|---------------|--------|---------------|--------------------------|------------------|--------------------------|---------|---------------|---------------|
| NARROW | 4' | LINEAL RIBBED | POLYCARBONATE | CT2-DP-1L4 | CT2-DP-1L4-FR50 | 30 | 180 | 25LBS/11.3KG |
| | | LINEAL RIBBED | IMPACT RESISTANT ACRYLIC | CT2-DIRA-1L4 | CT2-DIRA-1L4-FR50 | 30 | 360 | 25LBS/11.3KG |
| | | SMOOTH | POLYCARBONATE | CT2-CP-1L4 | CT2-CP-1L4-FR50 | 40 | 360 | 41LBS/18.14KG |
| | | SMOOTH | IMPACT RESISTANT ACRYLIC | CT2-CIRA-1L4 | CT2-CIRA-1L4-FR50 | 40 | 360 | 41LBS/18.14KG |
| WIDE | 2' | LINEAL RIBBED | POLYCARBONATE | CT2-DP-2L2 | CT2-DP-2L2-FR50 | 20 | 180 | 22LBS/9.97KG |
| | | LINEAL RIBBED | IMPACT RESISTANT ACRYLIC | CT2-DIRA-2L2 | CT2-DIRA-2L2-FR50 | 20 | 180 | 21LBS/9.5KG |
| | | DEEP | IMPACT RESISTANT ACRYLIC | CT2-LIRA-2L2 | CT2-LIRA-2L2-FR50 | 20 | 180 | 21LBS/9.5KG |
| | 4' | LINEAL RIBBED | POLYCARBONATE | CT2-DP-2L4 | CT2-DP-2L4-FR50 | 20 | 240 | 21LBS/9.5KG |
| | | LINEAL RIBBED | IMPACT RESISTANT ACRYLIC | CT2-DIRA-2L4 | CT2-DIRA-2L4-FR50 | 20 | 240 | 38LBS/17.2KG |
| | | SMOOTH | POLYCARBONATE | CT2-CP-2L4 | CT2-CP-2L4-FR50 | 20 | 240 | 50LBS/22.6KG |
| | | SMOOTH | IMPACT RESISTANT ACRYLIC | CT2-CIRA-2L4 | CT2-CIRA-2L4-FR50 | 20 | 240 | 27LBS/12.2KG |
| | | DEEP | IMPACT RESISTANT ACRYLIC | CT2-LIRA-2L4 | CT2-LIRA-2L4-FR50 | 20 | 240 | 28LBS/12.7KG |
| | 8' | LINEAL RIBBED | IMPACT RESISTANT ACRYLIC | CT2-DIRA-2L8 | CT2-DIRA-2L8-FR50 | 10 | 240 | 48LBS/21.7KG |
| | | DEEP | IMPACT RESISTANT ACRYLIC | CT2-LIRA-2L8 | CT2-LIRA-2L8-FR50 | 10 | 120 | 52LBS/23.6KG |

CITADEL 2™ LATCHES

| | | MATERIAL | PART # | PCS/BAG | PCS/CTN | WT/CTN |
|------|--|------------------|---------------|---------|---------|---------------|
| BULK | CITADEL 2 STAINLESS LATCH | 316 STAINLESS | CT2-LATCHSS | 200 | 2000 | 62LBS |
| | WHITE SECURE LOCKING PLASTIC LATCH | ACETAL COPOLYMER | CT2-LATCHW | 200 | 1600 | 25LBS/11.34KG |
| | CLEAR SECURE LOCKING PLASTIC LATCH | POLYCARBONATE | CT2-LATCHCC | 200 | 1600 | |
| 2' | WHITE SECURE LOCKING PLASTIC LATCH | ACETAL COPOLYMER | CT2-LATCH2W | 6 | 100 | |
| | CLEAR SECURE LOCKING PLASTIC LATCH | POLYCARBONATE | CT2-LATCH2CC | 6 | 100 | |
| 4' | LATCH BAG WITH ENDPLUGS | 316 STAINLESS | CT2-LATCH4-SS | 8 | 175 | 37LBS/16.9KG |
| | WHITE SECURE LOCKING PLASTIC LATCH BAG WITH ENDPLUGS | ACETAL COPOLYMER | CT2-LATCH4W | 8 | 100 | |
| | CLEAR SECURE LOCKING PLASTIC LATCH BAG WITH ENDPLUGS | POLYCARBONATE | CT2-LATCH4CC | 8 | 100 | |
| 8' | LATCH BAG WITH ENDPLUGS | 316 STAINLESS | CT2-LATCH8-SS | 14 | 100 | 35LBS/15.9KG |
| | WHITE SECURE LOCKING PLASTIC LATCH BAG WITH ENDPLUGS | ACETAL COPOLYMER | CT2-LATCH8W | 14 | 150 | |
| | CLEAR SECURE LOCKING PLASTIC LATCH BAG WITH ENDPLUGS | POLYCARBONATE | CT2-LATCH8CC | 14 | 80 | |

Product offering and specifications subject to change without notice.



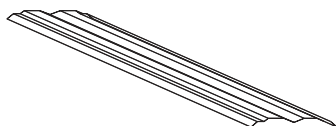
CITADEL 2™ GASKETED ENCLOSURE

OEM COMPONENTS:

Reflectors for the Citadel 2™ Fluorescent

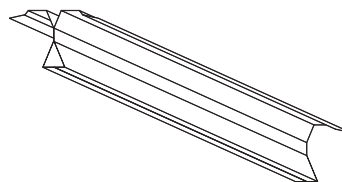
- Two Reflector Designs: Basic & Wide Distribution
- Both with Enhanced Specular Finish
- Minimum 92% Reflectivity
- For use with T5 & T8 Lamps

Basic Reflector:

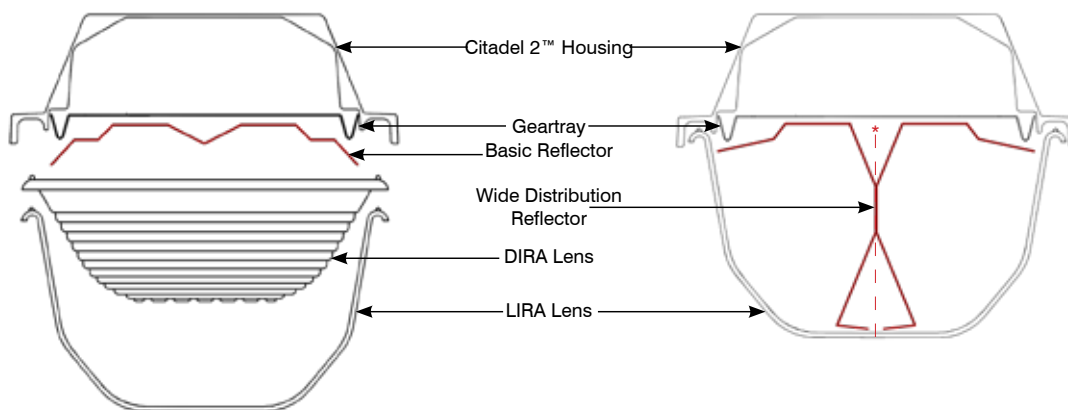


* Basic Reflector for use with a shallow or deep lens.

Wide Distribution Reflector:



* Reflector is a 2 piece assembly.



| Product | Part # | Length | Quantity Required Per Enclosure | | | Compatible with SLP's | | Carton QTY | Carton Weight |
|---------|--------------|--------|---------------------------------|--------|--------|-----------------------|-----------|------------|---------------|
| | | | 2 Foot | 4 Foot | 8 Foot | DIRA Lens | LIRA Lens | | |
| BASIC | CT2-RF-2L2-B | 21.0" | 1 | | | √ | | | |
| BASIC | CT2-RF-2L4-B | 44.5" | | 1 | 2 | √ | √ | 750 | 320 |
| WIDE | CT2-RF-2L4-W | 44.5" | | 2 | 4 | | √ | 375 | 180 |

Product offering and specifications subject to change without notice.

